

## CX-ED1079 Series 'Universal' Low & Standard Profile Electric Strikes



**CX-ED1079 (low profile, for 1/2" - 5/8" latch projection) and CX-ED1079D (standard depth, for 5/8" - 3/4" latch projection) 'Universal' grade 1 ANSI strikes offer 'universal' performance with selectable 12/24V AC/DC and fail safe/fail secure operation, and have horizontal body adjustment. Both models have optional latch monitoring.**



MORE FLEXIBILITY



BEST VALUE

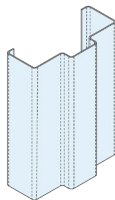
### Features

- Centerline latch entry for cylindrical locksets
- Adjustable strike body
- Selectable 12/24V AC/DC
- Selectable fail safe / fail secure operation
- (3) Stainless steel faceplates included
- Faceplates also available in black architectural finish (BHMA 622, US19)
- Horizontal adjustability of strike body
- Non-handed
- Easy fit connectors for power & monitoring wires
- Trim plate included
- Continuous duty operation
- 5 year warranty

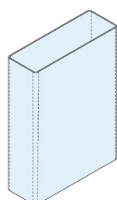


## DOOR FRAME TYPES

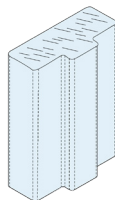
Hollow Metal Frame



Aluminum Frame

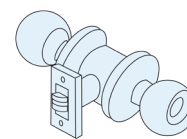


Wood Frame



## COMPATIBLE LOCKSETS

Cylindrical Lockset



## SPECIFICATIONS

VOLTAGE:	12/24V AC/DC	LATCH MONITOR:	SPDT, 100mA @ 24V DC
CURRENT DRAW:	260mA @ 12V AC/DC 150mA @ 24V AC/DC	MODE:	Field selectable fail safe/fail secure operation
STATIC HOLD FORCE:	1,500 lbs	OPERATION:	AC - Buzz, DC - Silent
DYNAMIC STRENGTH:	70 Ft-lbs	DUTY:	Continuous
ENDURANCE:	1,000,000 Cycles (Factory Tested) 250,000 Cycles (UL Verified)	DIMENSIONS (BODY):	<b>CX-ED1079:</b> 3-3/8" L x 1-3/4" W x 1-7/32" D (86mm x 44mm x 31mm) <b>CX-ED1079D:</b> 3-3/8" L x 1-3/4" W x 1-3/8" D (86mm x 44mm x 35mm)
MECHANICAL ADJUSTMENT:	Strike body		

## ORDERING INFORMATION

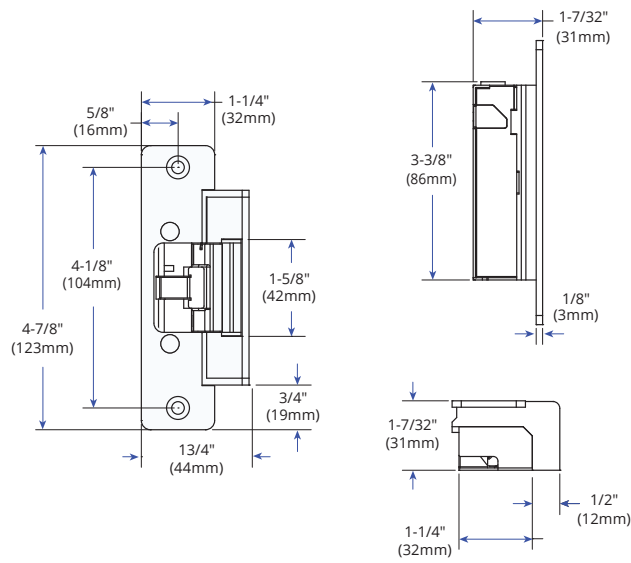
### MODEL

<b>CX-ED1079</b>	<b>Low Profile</b> Grade 1 'Universal' electric strike, 12/24V AC/DC, fail safe / fail secure operation, horizontal adjustment, and (3) stainless steel faceplates (CX-ESP1B, CX-ESP3B & CX-ESP4B)
<b>CX-ED1079L</b>	As above, with latch monitoring
<b>CX-ED1079-BK</b>	<b>Low Profile</b> Grade 1 'Universal' electric strike, 12/24V AC/DC, fail safe / fail secure operation, horizontal adjustment, and (3) Black faceplates (CX-ESP1B-BK, CX-ESP3B-BK & CX-ESP4B-BK)
<b>CX-ED1079L-BK</b>	As above, with latch monitoring
<b>CX-ED1079D</b>	<b>Standard Depth</b> Grade 1 'Universal' electric strike, 12/24V AC/DC, fail safe / fail secure operation, horizontal adjustment, and (3) stainless steel faceplates (CX-ESP1B, CX-ESP3B & CX-ESP4B)
<b>CX-ED1079DL</b>	As above, with latch monitoring
<b>CX-ED1079D-BK</b>	<b>Standard Depth</b> Grade 1 'Universal' electric strike, 12/24V AC/DC, fail safe / fail secure operation, horizontal adjustment, and (3) Black faceplates (CX-ESP1B-BK, CX-ESP3B-BK & CX-ESP4B-BK)
<b>CX-ED1079DL-BK</b>	As above, with latch monitoring

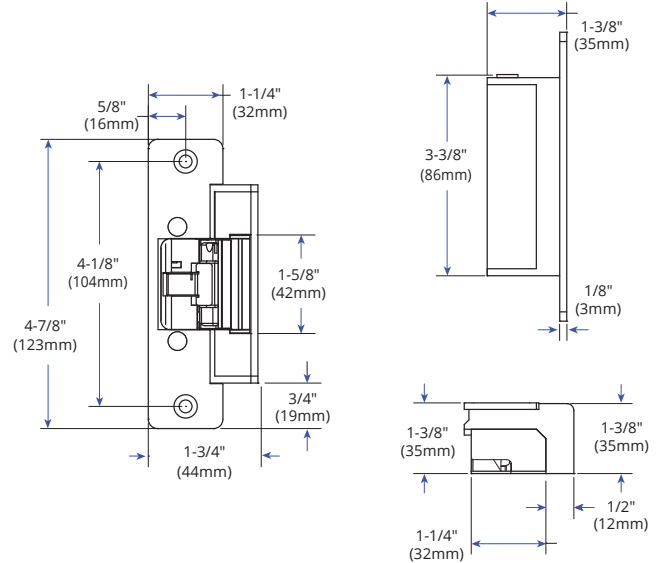


## DIMENSIONS

CX-ED1079



CX-ED1079D



## ORDERING INFORMATION

### INCLUDED IN PACKAGE

<b>CX-ESP1B</b>	'ANSI' Square, 4-7/8" x 1-1/4", stainless steel
<b>CX-ESP3B</b>	Hollow Metal Door, 6-7/8" x 1-1/4", stainless steel
<b>CX-ESP4B</b>	Wood Door, 7-15/16" x 1-7/16", stainless steel

### OPTIONAL FACEPLATES

<b>CX-ESP2B</b>	'ANSI' Round, 4-7/8" x 1-1/4", stainless steel
<b>CX-ESP1B-BK</b>	'ANSI' Square, 4-7/8" x 1-1/4", black finish (BHMA 622, US19)
<b>CX-ESP2B-BK</b>	'ANSI' Round, 4-7/8" x 1-1/4", black finish (BHMA 622, US19)
<b>CX-ESP3B-BK</b>	Hollow Metal Door, 6-7/8" x 1-1/4", black finish (BHMA 622, US19)
<b>CX-ESP4B-BK</b>	Wood Door, 7-15/16" x 1-7/16", black finish (BHMA 622, US19)



FACEPLATE DIMENSIONS			
INCLUDED IN PACKAGE			OPTIONAL FACEPLATE
<p><b>'ANSI' Square</b></p> <p><b>CX-ESP1B</b></p>	<p><b>Hollow Metal Door</b></p> <p><b>CX-ESP3B</b></p>	<p><b>Wood Door</b></p> <p><b>CX-ESP4B</b></p>	<p><b>'ANSI' Round</b></p> <p><b>CX-ESP2B</b></p>

LIP EXTENSION BRACKETS	
<b>CX-ED-LIP1</b>	1" Lip extension for 'ANSI' strikes (stackable)
<b>CX-ED-LIP2</b>	2" Lip extension for 'ANSI' strikes