

CV-940-TCP TCP-IP to RS232/422/485 Converter Installation Instructions

1.0 Introduction

The CV-940-TCP is cost effective and highly integrated serial -to-Ethernet Converter. Embedding a 8051 CPU, 64KB OTP ROM, 32 K bytes SRAM, 10/100Mbps Ethernet and serial port support handshake RTS,CTS. CV-940-TCP Can control 1x RS232/422/485 devices located virtually anywhere (via Ethernet or Internet).

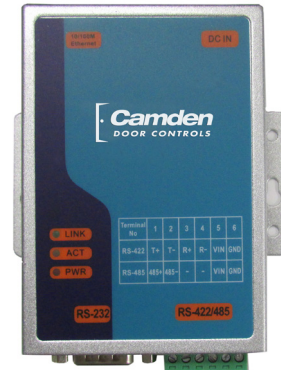
Automatically finds devices in the network Configuration over driver panels, serial port, Telnet, web Browser, SNMP automatic mode switching between Driver and RAW mode Support TCP/IP, UDP, DHCP, PPPoE, Dynamic DNS.

2.0 Features

- 3-in-1 RS-232\422\485 interface Max.230Kbps serial interface and 10\100 Mbps Ethernet
- Supports 4-and 2-wire Rs-485 with AUTO-SEND and built-in terminator
- Supports industrial 24 VDC power input and optional Power over serial
- Terminal block accessories for easy RS-422\485 serial wiring
- Supports IP configuration By MAC address
- Supports configuration store and copy for deployment
- Supports Driver, TCP server/Client, UDP Server/Client, Pair connection operation modes Easy and powerful configuration program
- Approval CE, RoHS

3.0 Hardware Installation& Initial Setup RS-232 Pinout: (DB 9 Mail)

DB9 Male	Signal	I/O
PIN1	RXD	IN
PIN2	TXD	OUT
PIN5	GND	-
PIN7	RTS	OUT
PIN8	RTS	IN

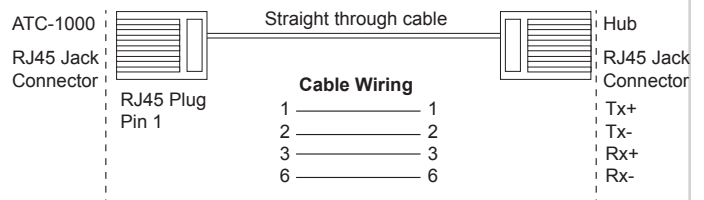


RS-422/485 Pinout: (Six Terminal from left)

Terminal No	1	2	3	4	5	6
RS422	T+	T-	R+	R-	VIN	GND
RS485	485+	485-	-	+	VIN	GND

3.3 Connect to 10/100M

CV-940-TCP 10/100/M port connect to switcher or HUB use straight-Through Cable.



3.4 Power Supply

CV-940-TCP TCP/IP converter can adopt the product's 12V power adapter for power supply or adopt power from other DC power or device .(+9 - +24V@500-100mA)

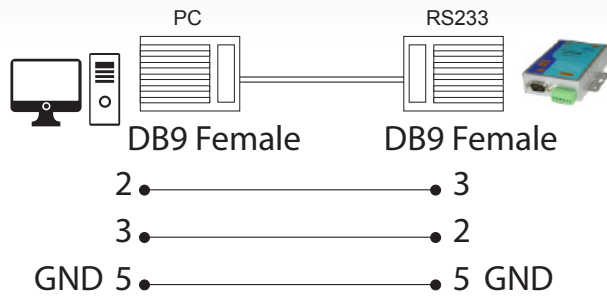
3.5 CV-940-TCP LED Indication

LINK: Indication Ethernet link, Green on Ethernet Link established

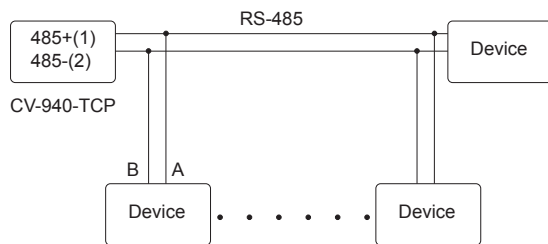
ACT: Data Sending /Receiving between Serial and the Ethernet

PWR: Indication Power

3.6 Connection Diagram RS232 Connection



RS-485 Connection



4.0 Configuration and Operation

IMPORTANT:

Set up your computer to assign it a static IP address in the **192.168.2.2 to 192.168.2.254** range with a subnet mask of 255.255.255.0. This is necessary to ensure that your computer can communicate with your CV-940-TCP. If you put IP Address in the range 192.168.1.2 to 192.168.1.255 you will not be able to access the CV-940-TCP.

Step 1: Open your web browser and type **http:192.168.2.1** in the browser's address box. This address is a factory set IP Address of your CV-940-TCP. Press **"Enter"**.

Step 2: The **"ID and Password required"** prompt box will appear.

Type **"admin"** (default username) in the Username field and type **"system"** (default password) in the Password field. Click **"OK"**. The setup screen will then appear.

USER LOG IN

Site:	192.168.2.1
ID:	admin
Password:	••••••
<input type="button" value="OK"/>	

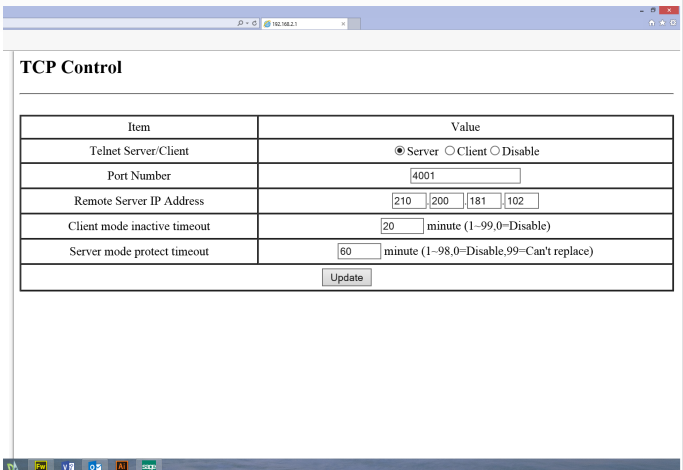
User login to enter a password.

Default ID: admin

Default Password: system

Go to **TCP Mode** and put the settings as given in the picture

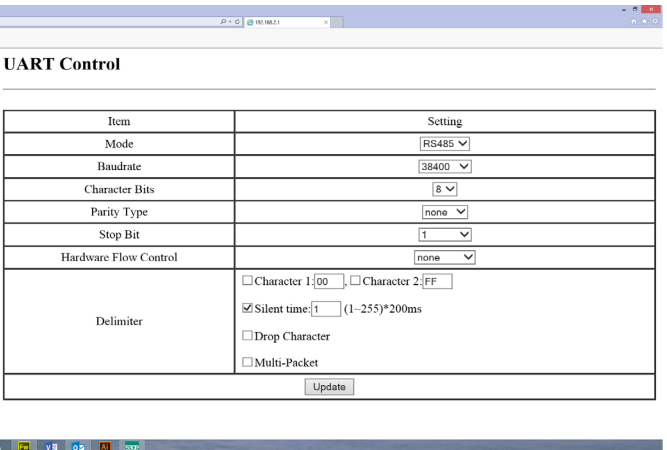
IMPORTANT: Port Number : 4001



IMPORTANT: Telnet Server/Client must be set to "Server"

Then go to **UART** and put the settings as given in the picture below:

IMPORTANT: Mode RS485; Baud Rate: 38400



IMPORTANT: These settings are important for connecting the **Fingerprint readers**, the rest, listed below are advanced and are not required.

4.2 The menu features as below:

- [Administrator](#)
- [Setting](#)
- [TCP Mode](#)
- [UDP Mode](#)
- [UART](#)
- [Reset Device](#)

All of the above functions are explained below:

4.3 Administrator Setup

Manager of the relevant setting page.

4.4 Authentication IP Configuration

The Users can change the username and password to prevent unauthorized access.

Login ID and password authentication, the maximum is 15 characters and numbers.

User name: default **admin**

Password: default **system**

4.5 System IP Configuration

The CV-940-TCP supports two IP connection types: Static IP, DHCP. These types are listed in the Web page for the IP Configuration setting. Each setup screen and available features will differ depending on what kind of IP connection types you select. Default is Static IP.

Static (or Fixed) IP

IP Address: default **192.168.2.1**

Subnet mask: default **255.255.255.0**

Password Setting	
Username	<input type="text" value="admin"/> max:15
Password Confirm	<input type="password" value="•••••"/> max:15 <input type="password" value="•••••"/>
<input type="button" value="Update"/>	

Gateway: default **192.168.2.254**

Primary DNS: default **192.168.2.253**

If you are connecting thought a static of fixed IP from your network environment, perform these steps:

Step 1: Enter IP address

Administrator Setting

Kernel Version	V1.44.3.3 2014/11/13
MAC Address	00:11:22:90:FA:EE
Nickname	<input type="text" value="NetUART"/>
IP Setting	
IP Address	<input type="text" value="192"/> . <input type="text" value="168"/> . <input type="text" value="2"/> . <input type="text" value="1"/>
Subnet Mask	<input type="text" value="255"/> . <input type="text" value="255"/> . <input type="text" value="255"/> . <input type="text" value="0"/>
Gateway	<input type="text" value="192"/> . <input type="text" value="168"/> . <input type="text" value="2"/> . <input type="text" value="1"/>
IP Configure	<input checked="" type="radio"/> Static <input type="radio"/> DHCP

Step 2: Enter Subnet mask

Step 3: Enter Gateway IP Address

Step 4: Enter primary DNS IP address

Step 5: click Update button

4.6 DHCP

Host name (Optional): default **NETUART**, maximum length 15 characters.

If there is DHCP Server existing in your network environment or your subscribe a CABLE service from your ISP, you can set IP configuration to DHCP to get a dynamic IP address. The **HOST Name** is optional item depending on your DHCP Server settings.

5.0 System Status

This screen shows the ATC-100's current status. All of the information's provided is read-only.

Kernel version: the installed version of the kernel.

MAC Address: At present the device MAC Address

Nickname: the product model name of NETUART

System Status

5.0 Load default setting

Allow Users to reset the CV-940-TCP to return the initial value, but the Mac Address will not be updated.

MAC Address	00:00:11:33:FF:00
Nickname	<input type="text" value="NETUART"/> <input type="button" value="Update"/>
System Version	V3.0.060110

Load Default Setting EEPROM

5.1. Telnet

Telnet connection setting:

Telnet Server/Client: Currently used to determine the device is to the Telnet sever or Client.

If the server, shows this connection have to wait for the other side of the Port, if the Client, show that external connections to the Port.

Remote server IP Address: When the Client, to be connected to the other side of the server IP address.

5.2 Operation mode

The CV-940-TCP support four operation mode: TCP Server, TCP Client, UDP Server and UDP Client. These modes are listed in the Web page for the Operation mode setting.

Each setup screen and available features will differ depending on what kind of operation mode you select.

Default is TCP server.

5.3 TCP Server

Port Number: default **23**, range **0** to **65535**

If your device is acted as passive to accept commands from remote and data be guaranteed to be received by peer is your concern, then you can set CV-940-TCP as TCP Server. Be sure the value of item **Port Number** is same as your remote control application using.

Client mode inactive time out (minutes): default **20** (0=Disable)

If you want to keep the connection between CV-940-TCP and your remote control application always on, then set the value of item Client mode inactive time out (minutes) to 0, otherwise, when the inactive time of no any traffic on line reach the setting value, CV-940-TCP will terminate this connection.

5.4 TCP Client

Remote Connection port Number: default **23**, range **0** to **65535**

Remote Host IP Address: default **210.200.181.102**

If your device is acted as active to report real-time status to remote and the data be guaranteed to be received by peer is concern, than you can set CV-940-TCP as TCP Client. Be sure the value of item Remote Connection port number is same as your remote control application using and set the correct value of **Remote Host IP Address**.

5.5 UDP server

Local Port number: default **21**, range **0** to **65535**

If your device is acted as passive to accept commands from remote and data be guaranteed to be received by peer is not your concern, than you can set CV-940-TCP as UDP server. Be sure the value of item **Local Port Number** is same as your remote control application using.

5.6 UDP Client

Remote Connection port number: default **21**, range **0** to **65535**

Remote Host IP Address: default 192.168.2.2.

If your device is acted as active to report real-time status to

remote and the data be guaranteed to be received by peer is not your concern, then you can set CV-940-TCP as TCP Client. Be sure the value of item **Remote connection Port Number** is same as your remote control application using and set the correct value of **Remote Host IP Address**.

Item	Value
Telnet Server/Client	<input checked="" type="radio"/> Server <input type="radio"/> Client <input type="radio"/> Disable
Port Number	4001
Remote Server IP Address	210 200 181 102

Telnet Control

6.0 UART control (RS-232)

The CV-940-TCP support three serial types: RS232,RS422 and RS485. The users can reference hardware diagram to directly select RS232,RS422 and RS485, no need select by software.

Baud Rate: default **57600**, range 300bps to 230,4 Kbps

Character Bits: 5,6,7,8 (default)

Parity Check: **None** (default), even, odd, space, mark,

Stop Bits: 1(default), 1.5 or 2

Hardware Flow Control: **None** (default), CTS\RTS (or Hardware)



Push Buttons



Keypads



Strikes



Magnetic Locks



Key Switches



Relays & Timers



Access Control



5502 Timberlea Blvd.,
Mississauga, ON Canada
L4W 2T7

www.camdencontrols.com
Toll Free: 1.877.226.3369



File: CV-940-TCP
Installation Instructions.indd R1
Revision: 24/08/2015
Part No.: 40-82B183