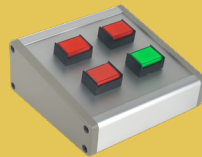


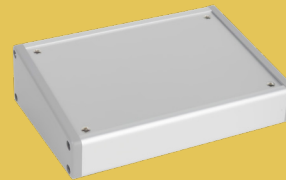
CUSTOM DESK TOP CONSOLES



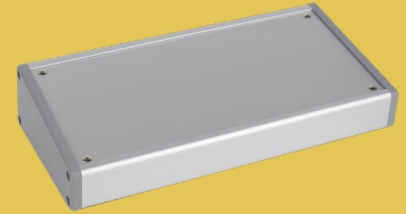
DP-04* (Extra Large)



DP-01* (Small)



DP-02 (Medium)



DP-03 (Large)

* Photo shows console size. LED and push buttons to be specified.

Camden desk consoles deliver reliable control and monitoring of doors in security and access control applications. Engineered to meet a wide range of security requirements, these consoles can operate and supervise electric strikes, electromagnet locks, electromechanical exit devices, or other electric locking systems.

Ideal for control rooms, reception areas, or security desks, each console supports multiple zone operation, allowing both momentary or maintained switch functions. Push buttons provide intuitive control and monitoring of assigned zones, while a built-in sounder gives an audible alert whenever a monitored condition changes—corresponding to the red or green indicator lamps.

For enhanced security, console operation can be restricted using a key switch to prevent unauthorized access.

Camden desk consoles offer a dependable, flexible, and professional-grade solution for managing secure access and emergency monitoring systems.

Features

- Slope front design 10° angle, with anodized faceplate for a durable housing
- Each station (can include) maintained or momentary single pole, double throw (SPDT) push button switches
- Red and green indicators
- Optional security key switch
- Optional signaling sounder with alarm reset button
- 12 or 24 VDC operation

Configuration Options

- Individual push buttons to control a specific maglock or door strike. Red or green indicators connected to the door hardware monitor switch provide confirmation when the door is open/closed or locked/unlocked.
- A sounder to audibly alert a change in state of any of the peripheral devices the console is monitoring or controlling.
- A central control cabinet providing all power for the entire system and discreet terminals for easy wiring to all the system peripheral devices.

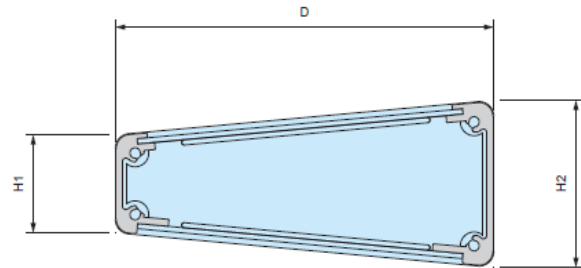
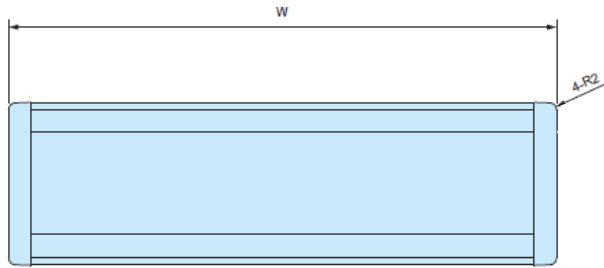


SPECIFICATIONS

- ABS UL94V-0 side panel material
- Extruded Anodized Aluminum A6063S-T5 front and back frames
- Aluminum A1100 Silver anodized front and back plates
- Four rubber adhesive feet

DIMENSIONS

Part Number	Imperial (W x H1 x H2 x D) inches	Metric (W x H1 x H2 x D) millimeters
DP-01 (Small)	4-5/16" x 1-3/32" x 1-29/32" x 4-13/32"	110mm x 28.4mm x 48.6mm x 110.5mm
DP-02 (Medium)	6-5/16" x 1-3/32" x 1-29/32" x 4-13/32"	160mm x 28.4mm x 48.6mm x 110.5mm
DP-03 (Large)	8-19/32" x 1-3/32" x 1-29/32" x 4-13/32"	220mm x 28.4mm x 48.6mm x 110.5mm
DP-04 (Extra Large)	14-7/32" x 2" x 3-29/32" x 11"	360mm x 50mm x 99mm x 280mm



CAM KEY SWITCH

KS2/20	2 Position, Momentary
KS2/21	2 Position, Maintained
KS3/22	3 Position, Maintained
KS4/24	4 Position, Maintained



LEDs

1/4" (6mm) LEDs

7012	1/4" LED, RED, 12V
7024	1/4" LED, RED, 24V
7112	1/4" LED, Green, 12V
7124	1/4" LED, Green, 24V
7412	1/4" LED, Amber, 12V
7424	1/4" LED, Amber, 24V
7612	1/4" LED, Bi-Color Red/Green 12V
7624	1/4" LED, Bi-Color Red/Green 24V



1/2" (12mm) LEDs

8024	1/2" LED, Red 12/24V
8124	1/2" LED, Green 12/24V



TOGGLE SWITCH

TS-30	Two position, SPST
TS-31	Three position, SPST



SOUNDER

S	85db Sounder
----------	--------------



CUSTOM LASER TEXT OR LINE ART GRAPHICS

FG	Faceplate Graphics <i>Submit a sketch for customer service to confirm available font & spacing.</i>
-----------	--



BUTTON TYPE

CM-300 STYLE, ILLUMINATED, 1" WIDE

3NR	Maintained, SPDT, Red
3MR	Momentary, SPDT, Red
3NG	Maintained, SPDT, Green
3MG	Momentary, SPDT, Green
3BG	Button Graphic, Maximum 6 Characters
SW-3MRD	Maintained, DPDT, Red
SW-3NGD	Momentary, DPDT, Red
SW-3MGD	Maintained, DPDT, Green
SW-3MGD	Momentary, DPDT, Green



CM-7000 STYLE, RECESSED BUTTON, 1"

7G/00	Green, N/O SPST Momentary
7G/10	Green, N/C SPST Momentary
7G/20	Green, N/O & N/C DPST Momentary
7G/85	Green, DPST 1-60 Sec Pneumatic Time Delay
7/BG	Button Graphic, Max. 5 Characters



CM-8000 STYLE, EXTENDED BUTTON, 1"

8G/00	Green, N/O SPST Momentary
8G/10	Green, N/C SPST Momentary
8G/20	Green, N/O & N/C DPST Momentary
8G/85	Green, DPST 1-60 Sec Pneumatic Time Delay
8/BG	Button Graphic, Max. 5 Characters



CM-9000 STYLE, METAL BUTTON, 7/8"

SW-9M	DPDT Momentary
SW-9N	DPDT Maintained



Opening New Doors to Innovation, Quality, and Support!

2395 Skymark Ave, Mississauga, ON Canada L4W 4Y6 • US-Toll Free: 1(833) 726-3367 | CAN-Toll Free: 1(877) 226-3369
Tel: (905) 366-3377 | Fax: (905) 366-3378 | E-mail: info@camdencontrols.com | www.camdencontrols.com



Part #: MKTG-LIT-SP-CUSTDESKCON