

CS-CTN Series Door Monitoring / Control Stations



Camden's extensive line of LED annunciators includes the option for custom door monitoring and control stations. Camden flush mount stations consists of heavy gauge single, double and triple gang stainless steel faceplates that can be fully customized to meet the exact requirements of each application. Camden desktop consoles are available in various sizes and made from extruded anodized aluminum.

Control Station Components

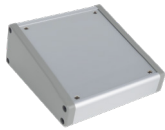
Camden monitor/control stations are configured from a range of available options. The finished product model number is based upon the specific options defined, in sequence.

Features

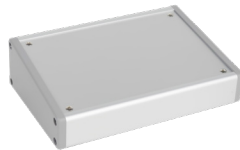
- Custom design with the low cost & quick delivery of stock product
- Heavy gauge stainless steel faceplates mount on standard in-wall electrical boxes
- Option for push buttons, including buttons with LED illumination
- Desktop versions are made from anodized aluminum with a 10° incline
- Option for 1/2" or 1/4" LEDs
- Option for cam key switches or toggle switches
- Option for sounder (common or individual door)
- Option for custom laser etched text or graphics on faceplate
- 3 year warranty



DESKTOP SIZES (ALL DESKTOP CONSOLES HAVE A 10° INCLINE)



CP-04
Small Desktop Console
4-11/32"W x 4-11/32"D
(110mm x 110mm)



CP-05
Medium Desktop Console
6-5/16"W x 4-11/32"D
(160mm x 110.5mm)



CP-06
Large Desktop Console
8-21/32"W x 4-11/32"D
(220mm x 110.5mm)



CP-07
Extra Large Desktop Console
11"W x 11"D
(280mm x 280mm)

FACEPLATE SIZES



CP-01
Single Gang



CP-02
Double Gang



CP-03
Triple Gang

CAM KEY SWITCH

KS2/21	2 Position, Maintained
KS2/20	2 Position, Momentary
KS3/22	3 Position, Maintained
KS4/24	4 Position, Maintained



LEDs

1/4" (6mm) LEDs

7012	1/4" LED, RED, 12V
7024	1/4" LED, RED, 24V
7112	1/4" LED, Green, 12V
7124	1/4" LED, Green, 24V
7412	1/4" LED, Amber, 12V
7424	1/4" LED, Amber, 24V
7612	1/4" LED, Bi-Color Red/Green 12V
7624	1/4" LED, Bi-Color Red/Green 24V



1/2" (12mm) LEDs

8024	1/2" LED, Red 12/24V
8124	1/2" LED, Green 12/24V



BUTTON QUANTITY

1 to 9 Buttons

BUTTON TYPE

CM-300 STYLE, ILLUMINATED, 1-5/8" WIDE

3NR	Maintained, SPDT, Red
3MR	Momentary, SPDT, Red
3NG	Maintained, SPDT, Green
3MG	Momentary, SPDT, Green
3BG	Button Graphic, Maximum 6 Characters



CM-7000 STYLE, RECESSED BUTTON, 1"

7G/00	Green, N/O SPST Momentary
7G/10	Green, N/C SPST Momentary
7G/20	Green, N/O & N/C DPST Momentary
7G/85	Green, DPST 1-60 Sec Time Delay
7G/BG	Button Graphic, Max. 5 Characters



CM-8000 STYLE, EXTENDED BUTTON, 1"

8G/00	Green, N/O SPST Momentary
8G/10	Green, N/C SPST Momentary
8G/20	Green, N/O & N/C DPST Momentary
8G/85	Green, DPST 1-60 Sec Time Delay
8G/BG	Button Graphic, Max. 5 Characters



CM-9000 STYLE, METAL BUTTON, 7/8"

SW-9M	DPDT Momentary
SW-9N	DPDT Maintained



SOUNDER

S	85db Sounder
----------	--------------



CUSTOM LASER TEXT OR LINE ART GRAPHICS

FG	Faceplate Graphics
-----------	--------------------



Opening New Doors to Innovation, Quality, and Support!

2395 Skymark Ave, Mississauga, ON Canada L4W 4Y6 • Toll Free: 1(877) 226-3369 (CAMDEN9)
Tel: (905) 366-3377 | Fax: (905) 366-3378 | E-mail: info@camdencontrols.com | www.camdencontrols.com



Certified ISO 9001:2015

Part #: MKTG-LIT-SP-CSCTN_R2