

## CX-ED1309 Series 'Universal' Electric Strike for Narrow Stile Aluminum Door Frames



Camden's Electric Strikes offer unsurpassed flexibility and performance.

CX-ED1309 Series Grade 1 ANSI electric strikes feature 'Universal' field selection of 12/24V, AC or DC and fail safe or fail secure operation.

Specifically designed for narrow stile aluminum door frames and maximizes latch protection in store front retail commercial door applications.



BEST VALUE



BEST QUALITY

CX-ED1309 Electric Strike Body may be purchased with a separate ANSI square, ANSI round, hollow metal or wood door faceplate, with either a brushed aluminum or dark bronze finish.

CX-ED1379 packages the Strike Body with (2) ANSI round faceplates; one with brushed aluminum finish and one with dark bronze finish.

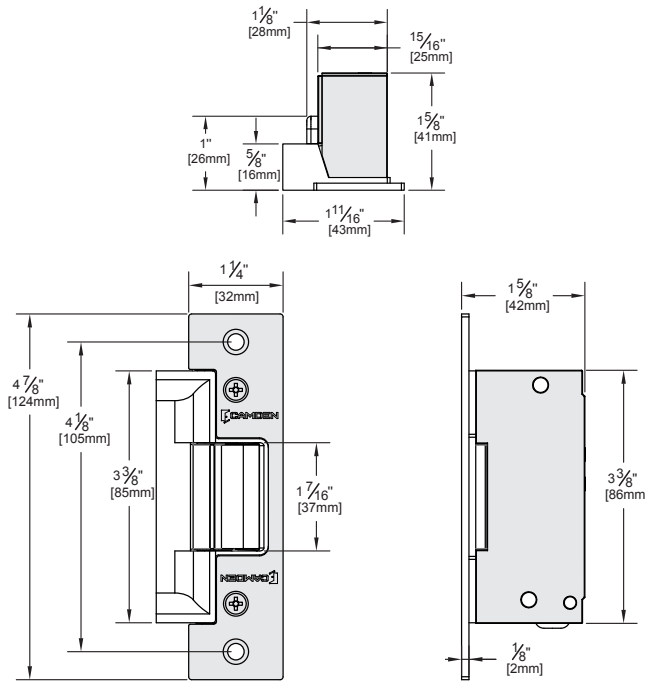
### Features

- Ideal for cylindrical or spring latch locksets in wood, hollow metal or aluminum frames
- CX-ED1379 includes two ANSI round faceplates
- Selectable Fail Safe/Fail Secure
- Selectable 12/24V, AC/DC
- 1/2" to 5/8" Latch Projection
- Easy Fit Connectors and Mounting Tabs Included
- A wide selection of aluminum and dark bronze faceplates
- BHMA certified A156.31
- 5 Year Warranty

## SPECIFICATIONS

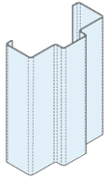
<b>VOLTAGE:</b>	12/24V AC/DC
<b>CURRENT DRAW:</b>	260mA @ 12V DC 150mA @ 24V DC
<b>STATIC STRENGTH:</b>	1,500 Lbs.
<b>DYNAMIC STRENGTH:</b>	70 Ft-Lbs.
<b>ENDURANCE:</b>	1,000,000 Cycles (Factory Tested) 500,000 Cycles (UL Verified)
<b>FACEPLATES:</b>	<b>CX-ED1379:</b> Brushed Aluminum (BHMA 628) Dark Bronze (BHMA 710)
<b>OPERATION:</b>	AC-Buzz, DC-Silent
<b>DUTY:</b>	Continuous
<b>DIMENSIONS (BODY):</b>	4-7/8"H x 1-11/16"W x 1-5/8"D (124mm x 43mm x 42mm)

## DIMENSIONS

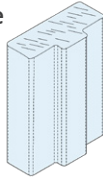


## DOOR FRAME TYPES

Hollow Metal Frame

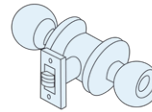


Wood Frame

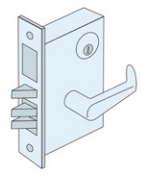


## COMPATIBLE LOCKSETS

Cylindrical Lockset



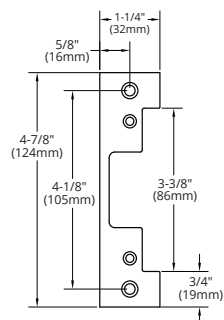
Mortise Locks



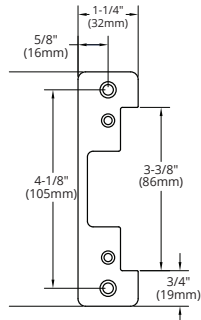
## ORDERING INFORMATION

<b>CX-ED1379</b>	Grade 1 'Universal' Electric Strike, 12/24V AC/DC, fail safe/fail secure operation with (1) CX-ESF-2 ANSI Round Faceplate - Brushed Aluminum finish (1) CX-ESF-2BZ ANSI Round Faceplate - Dark Bronze finish
<b>CX-ED1309</b>	Grade 1 'Universal' Electric Strike Body, 12/24V AC/DC, fail safe/fail secure operation. Order faceplate separately.

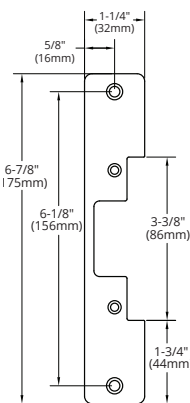
## FACEPLATE OPTIONS (Brushed Aluminum Finish - BHMA 628) / Dark Bronze Finish - BHMA 710)



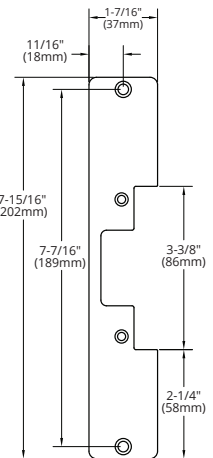
**CX-ESF-1: Aluminum Finish**  
**CX-ESF-1BZ: Dark Bronze Finish**  
ANSI Square



**CX-ESF-2: Aluminum Finish**  
**CX-ESF-2BZ: Dark Bronze Finish**  
ANSI Round



**CX-ESF-3: Aluminum Finish**  
**CX-ESF-3BZ: Dark Bronze Finish**  
Hollow Metal Frame



**CX-ESF-4: Aluminum Finish**  
**CX-ESF-4BZ: Dark Bronze Finish**  
Wood Frame



Opening New Doors to Innovation, Quality, and Support!

2395 Skymark Ave, Mississauga, ON Canada L4W 4Y6 • Toll Free: 1(877) 226-3369 (CAMDEN9)  
Tel: (905) 366-3377 | Fax: (905) 366-3378 | E-mail: info@camdencontrols.com | www.camdencontrols.com



Certified ISO 9001:2015

FS 641752

Part #: MKTG-LIT-SP-CX-ED1309\_R1