

## CX-ED1079 Series 'Universal' Low & Standard Profile Electric Strikes



CX-ED1079 (low profile, for 1/2" - 5/8" latch projection) and CX-ED1079D (standard depth, for 5/8" - 3/4" latch projection) 'Universal' grade 1 ANSI strikes offer 'universal' performance with selectable 12/24V AC/DC and fail safe/fail secure operation, and have horizontal body adjustment. Both models have optional latch monitoring.



MORE FLEXIBILITY



BEST VALUE

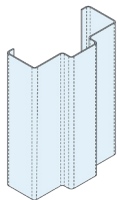
### Features

- Centerline latch entry for cylindrical locksets
- Adjustable strike body
- Selectable 12/24V AC/DC
- Selectable fail safe / fail secure operation
- (3) Stainless steel faceplates included
- Horizontal adjustability of strike body
- Non-handed
- Easy fit connectors for power & monitoring wires
- Trim plate included
- Continuous duty operation
- 5 year warranty

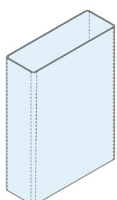


## DOOR FRAME TYPES

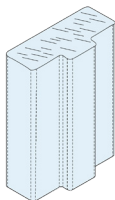
Hollow Metal Frame



Aluminum Frame

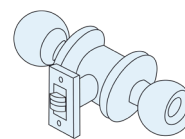


Wood Frame



## COMPATIBLE LOCKSETS

Cylindrical Lockset



## SPECIFICATIONS

VOLTAGE:	12/24V AC/DC	LATCH MONITOR:	SPDT, 100mA @ 24V DC
CURRENT DRAW:	260mA @ 12V AC/DC 150mA @ 24V AC/DC	MODE:	Field selectable fail safe/fail secure operation
STATIC HOLD FORCE:	1,500 lbs	OPERATION:	AC - Buzz, DC - Silent
DYNAMIC STRENGTH:	70 Ft-lbs	DUTY:	Continuous
ENDURANCE:	1,000,000 Cycles (Factory Tested) 250,000 Cycles (UL Verified)	DIMENSIONS (BODY):	<b>CX-ED1079:</b> 3-3/8" L x 1-3/4" W x 1-7/32" D (86mm x 44mm x 31mm) <b>CX-ED1079D:</b> 3-3/8" L x 1-3/4" W x 1-3/8" D (86mm x 44mm x 35mm)
MECHANICAL ADJUSTMENT:	Strike body		

## ORDERING INFORMATION

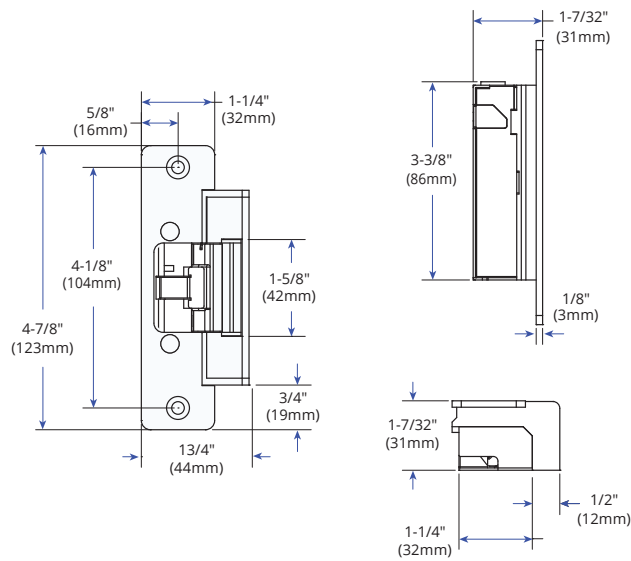
### MODEL

<b>CX-ED1079</b>	<b>Low Profile</b> Grade 1 'Universal' electric strike, 12/24V AC/DC, fail safe / fail secure operation, horizontal adjustment, and (3) stainless steel faceplates (CX-ESP1B, CX-ESP3B & CX-ESP4B)
<b>CX-ED1079L</b>	As above, with latch monitoring
<b>CX-ED1079D</b>	<b>Standard Depth</b> Grade 1 'Universal' electric strike, 12/24V AC/DC, fail safe / fail secure operation, horizontal adjustment, and (3) stainless steel faceplates (CX-ESP1B, CX-ESP3B & CX-ESP4B)
<b>CX-ED1079DL</b>	As above, with latch monitoring

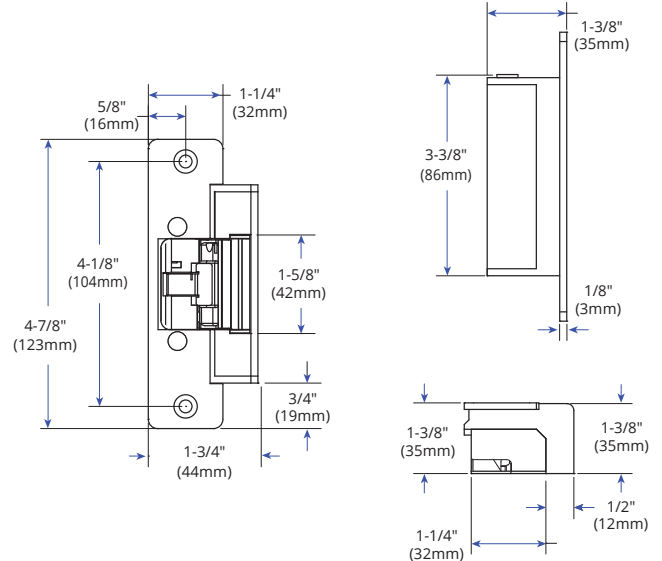


## DIMENSIONS

CX-ED1079



CX-ED1079D



## ORDERING INFORMATION

### INCLUDED IN PACKAGE

<b>CX-ESP1B</b>	'ANSI' Square, 4-7/8" x 1-1/4", stainless steel
<b>CX-ESP3B</b>	Hollow Metal Door, 6-7/8" x 1-1/4", stainless steel
<b>CX-ESP4B</b>	Wood Door, 7-15/16" x 1-7/16", stainless steel

### OPTIONAL FACEPLATES

<b>CX-ESP2B</b>	'ANSI' Round, 4-7/8" x 1-1/4", stainless steel
<b>CX-ESP1B-BK</b>	'ANSI' Square, 4-7/8" x 1-1/4", black finish (BHMA 622, US19)
<b>CX-ESP2B-BK</b>	'ANSI' Round, 4-7/8" x 1-1/4", black finish (BHMA 622, US19)
<b>CX-ESP3B-BK</b>	Hollow Metal Door, 6-7/8" x 1-1/4", black finish (BHMA 622, US19)
<b>CX-ESP4B-BK</b>	Wood Door, 7-15/16" x 1-7/16", black finish (BHMA 622, US19)

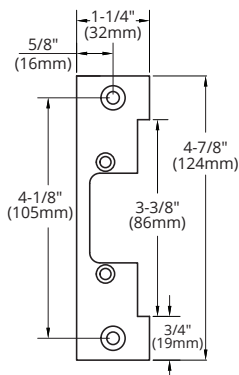


## FACEPLATE DIMENSIONS

### INCLUDED IN PACKAGE

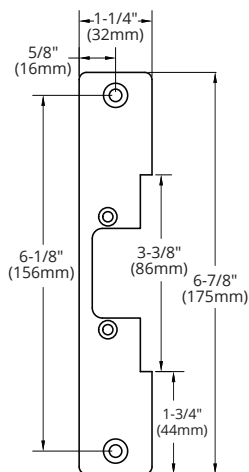
### OPTIONAL FACEPLATE

'ANSI' Square



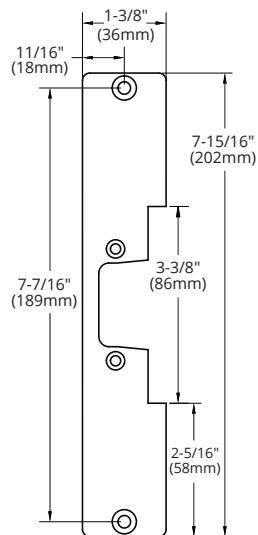
CX-ESP1B

Hollow Metal Door



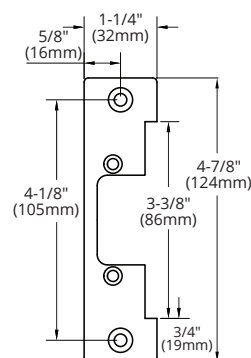
CX-ESP3B

Wood Door



CX-ESP4B

'ANSI' Round



CX-ESP2B

### CUTTING JIGS

<b>CX-JIG1</b>	For CX-ED1079(L) Strike, 'ANSI' Round faceplate (CX-ESP2B)
<b>CX-JIG2</b>	For CX-ED1079(L) Strike, Hollow metal door faceplate (CX-ESP3B)
<b>CX-JIG3</b>	For CX-ED1079D(L) Strike, 'ANSI' Round faceplate (CX-ESP2B)
<b>CX-JIG4</b>	For CX-ED1079D(L) Strike, Hollow metal door faceplate (CX-ESP3B)
<b>CX-JIG5</b>	For CX-ED1079(L)/D(L) Strikes, 'ANSI' & hollow metal door faceplates

### LIP EXTENSION BRACKETS

<b>CX-ED-LIP1</b>	1" Lip extension for 'ANSI' strikes (stackable)
<b>CX-ED-LIP2</b>	2" Lip extension for 'ANSI' strikes



Opening New Doors to Innovation, Quality, and Support!

2395 Skymark Ave, Mississauga, ON Canada L4W 4Y6 • Toll Free: 1(877) 226-3369 (CAMDEN9)

Tel: (905) 366-3377 | Fax: (905) 366-3378 | E-mail: [info@camdencontrols.com](mailto:info@camdencontrols.com) | [www.camdencontrols.com](http://www.camdencontrols.com)



Certified ISO 9001:2015

Part #: MKTG-LIT-SP-CX-ED1079\_R2

Page 4 of 4