

Electrified Locks, Relays and Timers

CX-DA810/DA810W

Battery Powered Door Prop Alarm

INSTALLATION INSTRUCTIONS

THIS PACKAGE INCLUDES:

- | | |
|--|--------------------------------------|
| 1 - Door Prop Alarm | 4 - Cylinder Cam Holders |
| 1 - Magnetic Door Contact | 1 - Cylinder Fixing Frame |
| 1 - Magnetic Contact Bracket | 1 - Fixing Frame Bracket |
| 2 - #14 x 1" PPH Type AB Self-Drilling Screws | 1 - M4 x 8mm Screw |
| 2 - 1/4-20 x 1" PPH Machine Screws | 1 - Cylinder Ring Tool |
| 2 - #6 x 1-1/4" PPH Type AB Self-Drilling Screws | 1 - Cylinder O-ring (W Version only) |
| 2 - 1/4" x 1 3/16" Anchor Plugs | 1 - Door Prop Alarm Signage |
| 1 - Cover Key Lock with 2 keys | 1 - 9VDC Battery |



1. GENERAL DESCRIPTION

The Camden DA810/DA810W is a battery-powered door prop alarm device mounted on a secured door. It provides instant or timed alerts when a door is held or propped open beyond a preset time. The door alarm and magnetic door contact mount easily onto the door and frame. The alarm triggers with integrated LED and buzzer notifications. It can be silenced automatically or manually with a key. The DA810W is designed for outdoor use.

2. DIMENSIONS

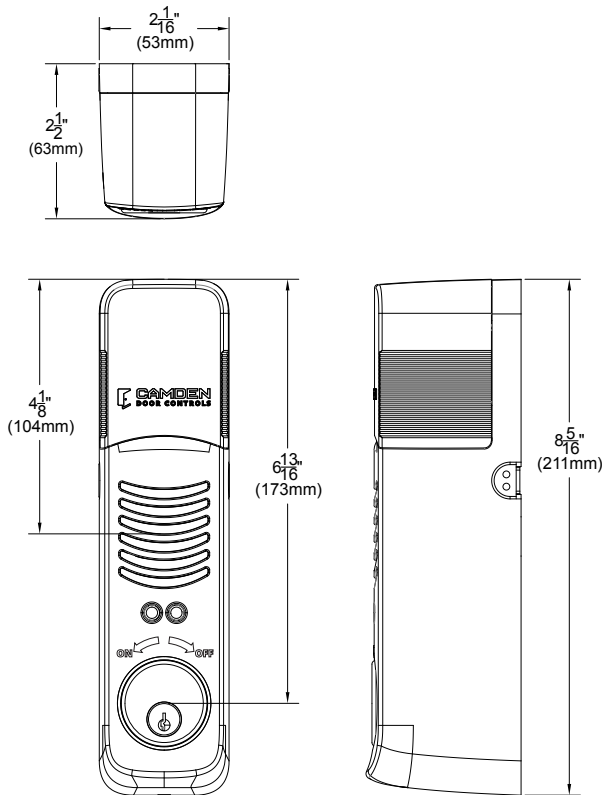


Figure 3.1 Dimensions

3. SPECIFICATIONS

Power Requirements	9VDC Battery
Alarm Triggering	Built-in door contact NC External door contact input
Security Features	Enhanced with LED and buzzer for alerts
Arming Modes	1. Standard 2. Always
Operation Mode	Door Chime Mode Door Propped Open Mode
Propped Door Time-Delay Alarm	Rotary Switch Position = Time-Delay (Adjustable from 1 second to 4 minutes) 0 = 1 second 1 = 15 seconds (Default) 2 = 30 seconds 3 = 45 seconds 4 = 1 minute 5 = 2 minutes 6 = 4 minutes
Dimensions	8-5/16" H x 2-1/16" W x 2-1/2" D (211mm x 53mm x 63mm)
Alarm Sounder	105 dB @ 3' (1m)
Operating Temperature	32° F to 113° F (0° C to 45° C)
IP Rating	IP44 (DA810W)
Impact Protection	IK04

4. EXPLODED VIEW AND PART DESCRIPTION

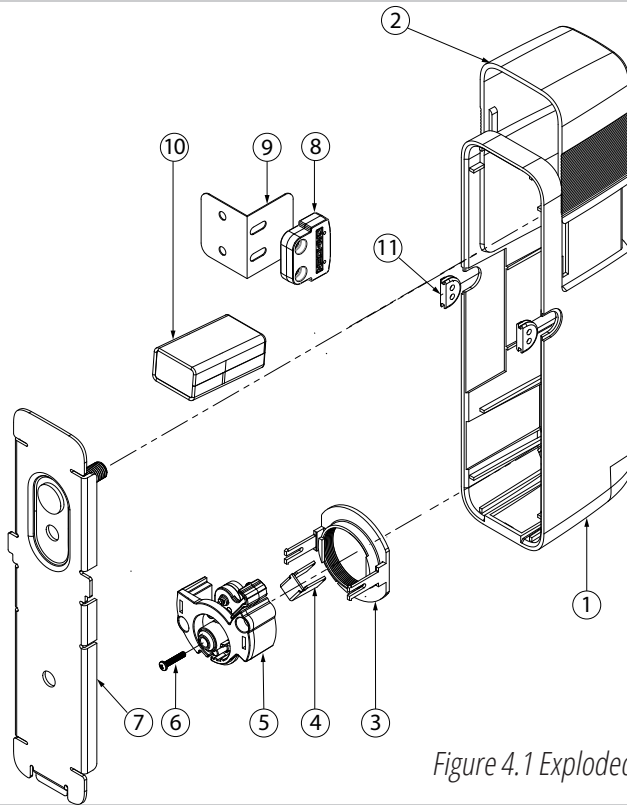


Figure 4.1 Exploded View

Item	Parts description	Material and specification	QTY
1	Cover	H23626C1	1
2		PC-1302-10	1
3	Cylinder Fixing Frame	POM Plastic	1
4	Fixing Frame Bracket	POM Plastic	1
5	Cam Assembly Kit	POM Plastic	1
6	Screw	M4 x 8mm	1
7	Backplate	SPCC Nickel plated	1
8	Magnetic Door Contact		1
9	Door Contact Bracket		1
10	9V Battery	Nil	1
11	Wire Grommet	Rubber	2

5. CYLINDER OPTIONS

The CX-DA810/DA810W alarm can be configured to work with mortise cylinders between 15/16" to 1-1/4" lengths with different cams.

Cam holders can be identified with the embossed letter markings.

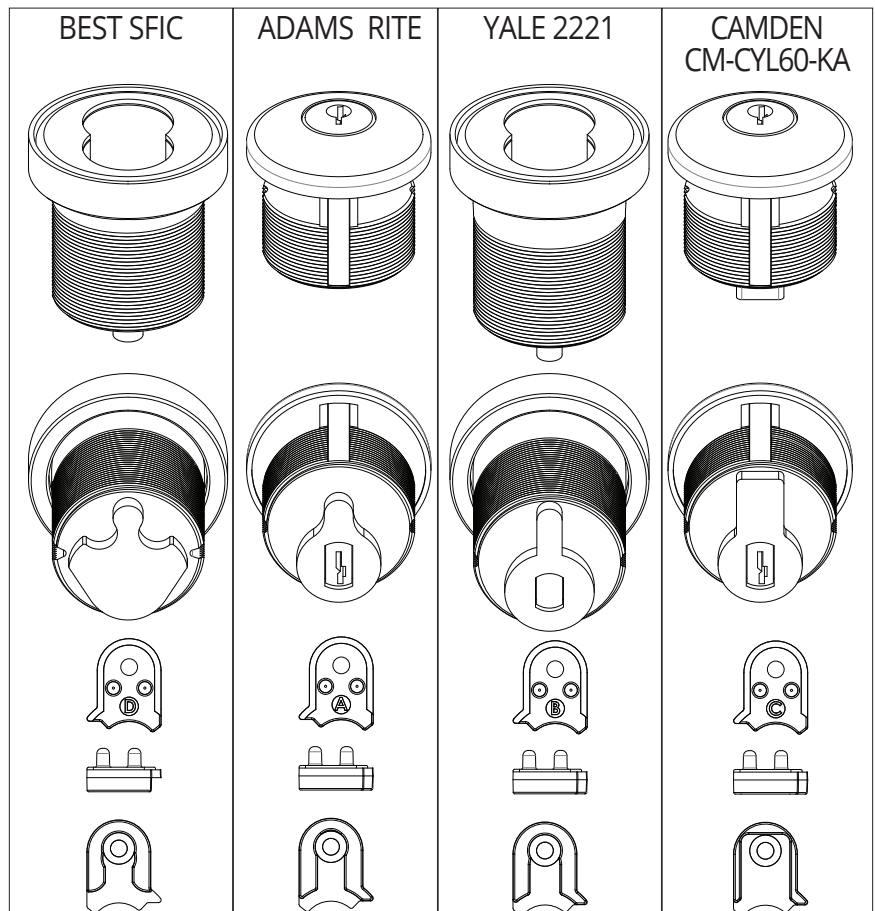
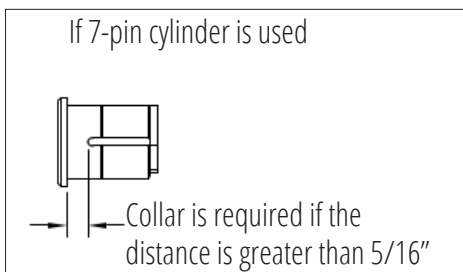


Figure 5.1 Four different types of lock cylinders and matching Cam Holders with letter marking identifier

6. CYLINDER INSTALLATION

The CX-DA810/DA810W is shipped with Cam Assembly Kits for both STANDARD Arming Mode and ALWAYS Arming Mode.

It is shipped in STANDARD Arming Mode by default if ordered with the Lock Cylinder pre-installed. (See Figure 6b)

It can be configured with the Lock Cylinder in ALWAYS Arming Mode. (See Figure 6c)

Refer to the table for the list of Camden Lock Cylinders available.

If the CX-DA810/DA810W does not have a lock cylinder pre-installed, follow the lock cylinder installation steps below.

6.1. Open the Alarm

- Slide up the cover case and insert the provided key into the cover key lock.
- Turn the key counterclockwise to detach the door alarm from its mounting backplate. (See Figure 6a)

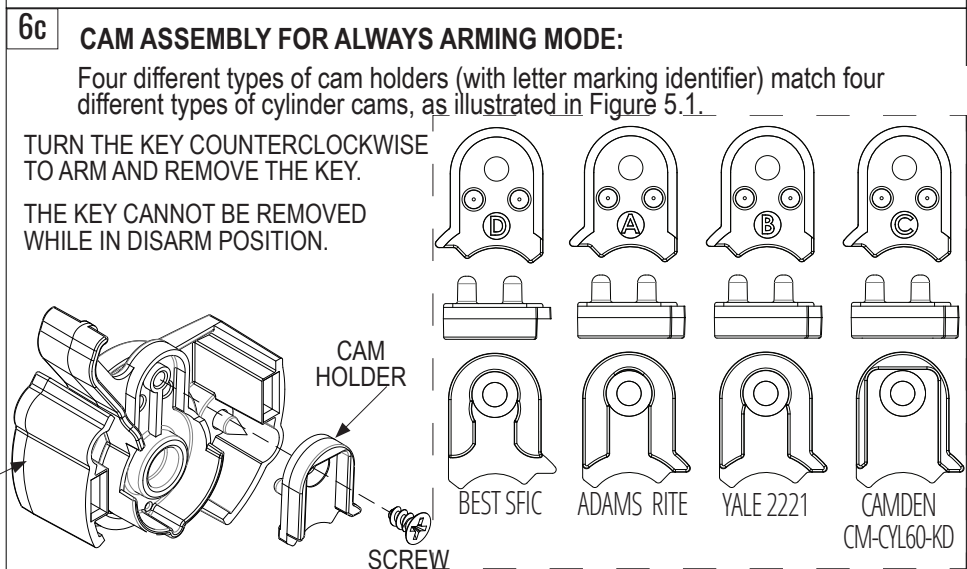
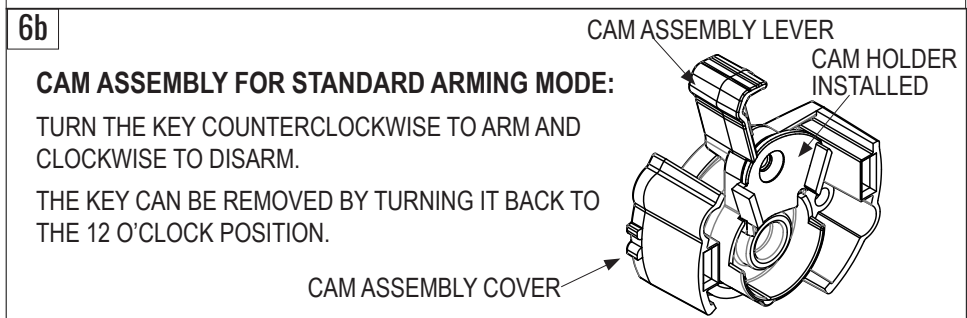
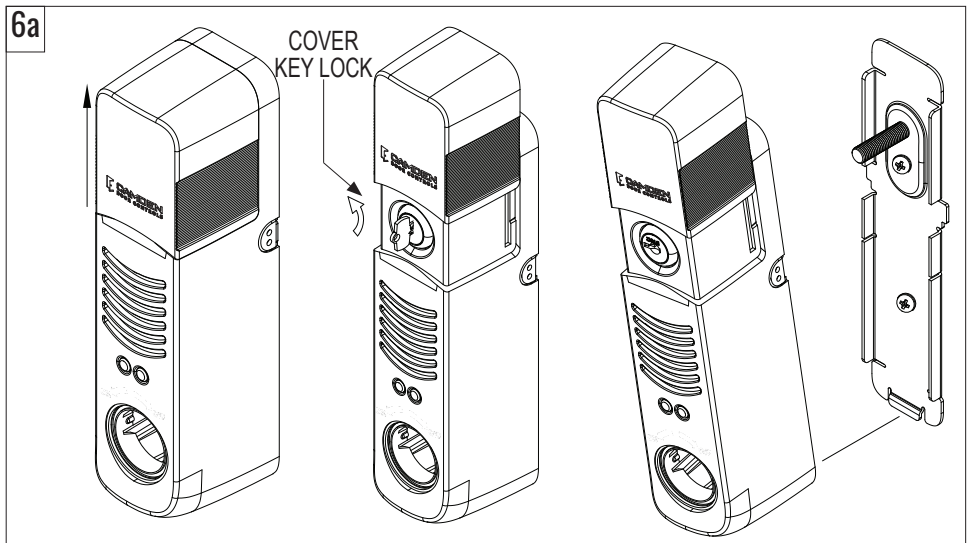
6.2. Select the Lock Cylinder

- Select the Mortise Lock Cylinder to install. Refer to the list of compatible cylinders as shown in Figure 5.1.

6.3. Cam Assembly/Holder

- Choose a suitable cam holder based on the selected lock cylinder:
 STANDARD ARMING MODE (Figure 6b)
 ALWAYS ARMING MODE (Figure 6c)
- If installing the Cam Assembly for STANDARD ARMING MODE, proceed to Step 6.4. (Figure 6b)
- If installing the Cam Assembly for ALWAYS ARMING MODE, unscrew the tiny screw on the existing cam holder, remove it, and install the new cam holder. (Figure 6c)

Part Number	Description
CX-DA810KD	Battery Powered Door Prop Alarm Grey with Cylinder Keyed Different
CX-DA810WKD	Battery Powered Door Prop Alarm Weatherized Grey with Cylinder Keyed Different
CX-DA810KD-BK	Battery Powered Door Prop Alarm Black with Cylinder Keyed Different
CX-DA810WKD-BK	Battery Powered Door Prop Alarm Weatherized Black with Cylinder Keyed Different

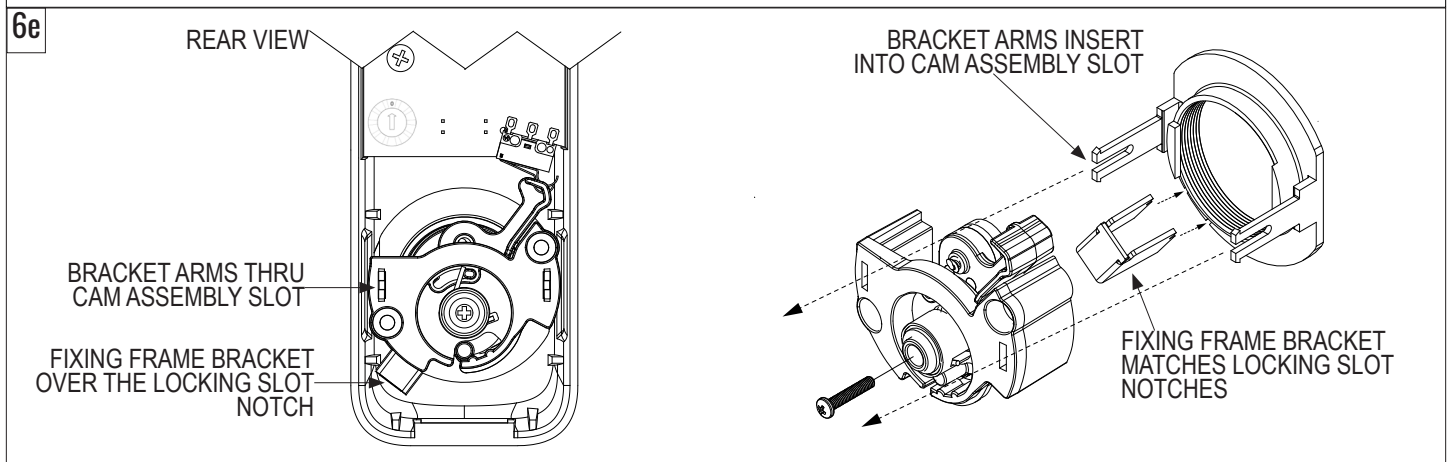
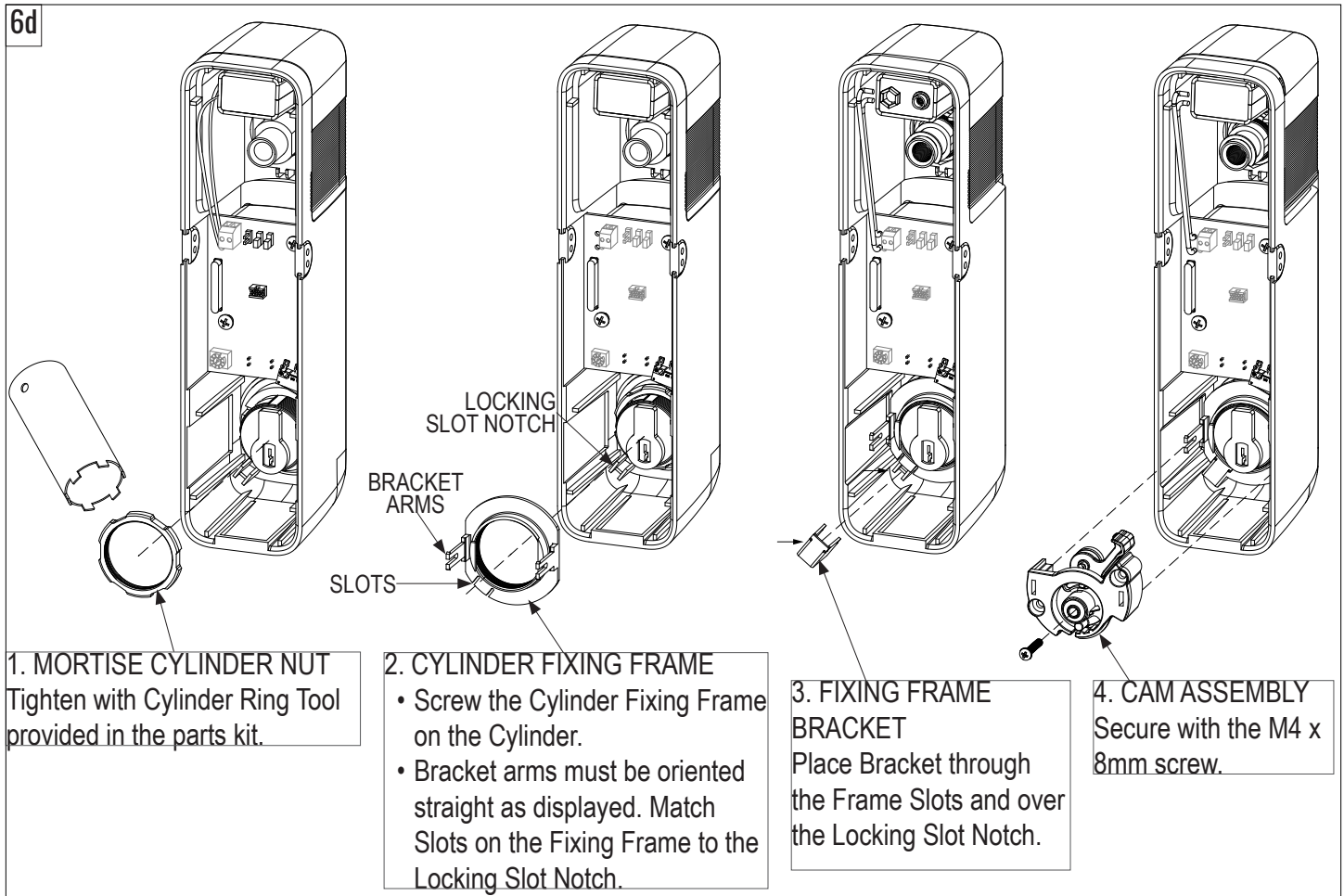


6.4. Secure the Lock Cylinder

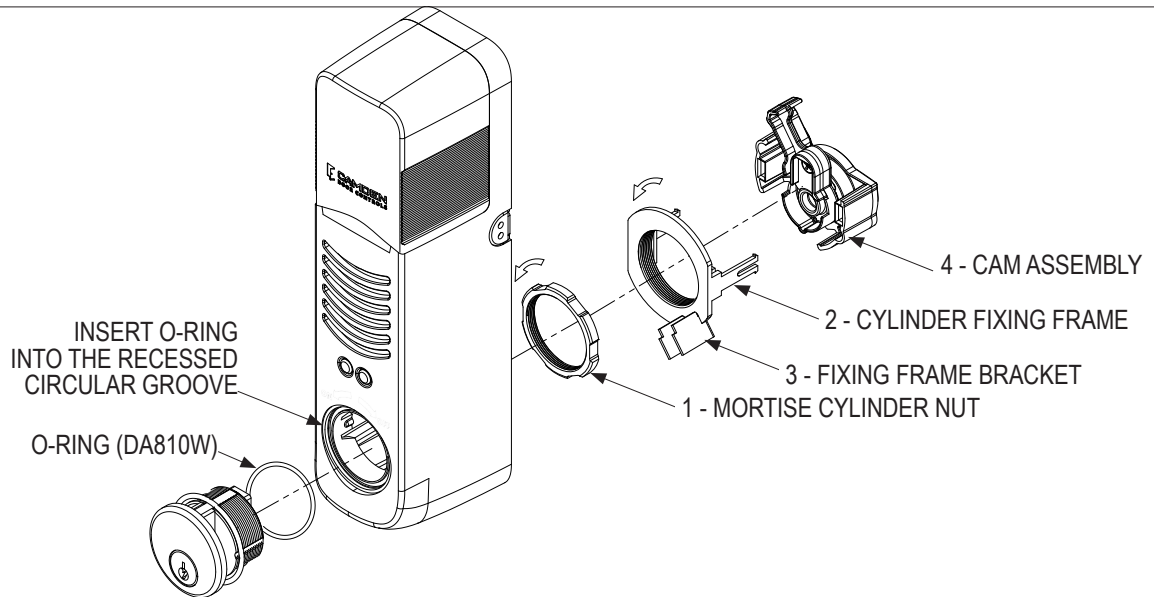
- Insert the lock cylinder through its designated hole and secure it with the Mortise Cylinder Nut from the rear.
- Tighten the Mortise Cylinder Nut using the Cylinder Ring Tool (provided in the parts kit). (See Figure 6d and 6f)
- For DA810W, insert the O-ring into the recessed circular groove on the designated hole and then insert the lock cylinder. (See Figure 6f)

6.5. Assemble the Lock Cylinder Components

Install the following components: **1. MORTISE CYLINDER NUT**, **2. CYLINDER FIXING FRAME**, **3. FIXING FRAME BRACKET**, **4. CAM ASSEMBLY**. Follow the sequence and details shown in Figure 6 (d, e, f).



6f



7. CONFIGURATION/SETTINGS

The CX-DA810/DA810W Door Prop Alarm features precise key positions for operational control: (See Figure 7a and 7b)

“OFF” Position: Turn the key to the 2 o’clock position to disarm the system. The key can be removed in this “OFF” position in **STANDARD** Arming Mode. The key cannot be removed in this “OFF” position in **ALWAYS** Arming Mode.

“ON” Position: Turn the key to the 12 o’clock position to arm the system. The key can be removed in this “ON” position while alarm remains armed in both **STANDARD** and **ALWAYS** Arming Modes.

JP3 Status Indicators

Use the JP3 and JP4 jumpers to configure the alarm’s response, affecting how the armed status and alarm functions are indicated and silenced:

JP3 ON (Armed): RED LED flashes twice every 6 seconds. In “Disarmed” mode, GREEN LED blinks twice every 6 seconds.

JP3 OFF (Armed): No LED indication for “Armed” or “Disarmed” status after arming or disarming.

JP4 Mode Selection

Sets the DA810/DA810W operation mode:

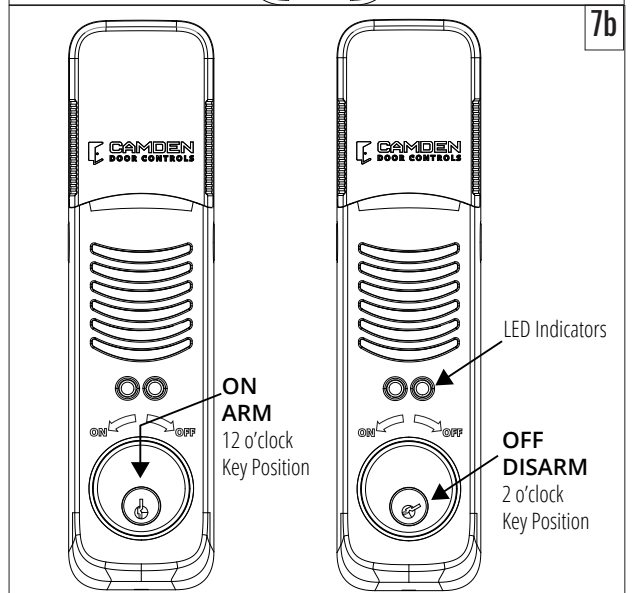
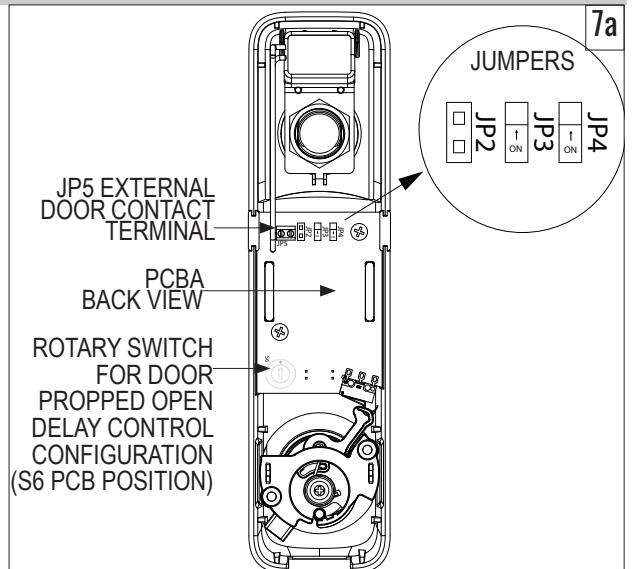
JP4 ON: Door Chime Mode.

JP4 OFF: Door Propped Open Mode.

Door Chime Mode: JP3 ON and JP4 ON

This mode gives a short alarm sound when the door opens.

1. Set the LED status indication for Door Chime Mode, set JP3 to ON and JP4 to ON.
2. Turn the key to the “OFF” (2 o’clock) position.
 - The GREEN LED flashes twice every 6 seconds.
3. Close the door so the door magnet is in the paired position.



CX-DA810/DA810W Battery Powered Door Prop Alarm

INSTALLATION INSTRUCTIONS

- Turn the key to the "ON" (12 o'clock) position.
 - The RED LED flashes twice every 6 seconds.
- Open the door and the alarm sounds four short beeps. The alarm sounder does not activate again until the door is closed and reopened.

Door Propped Open Mode: JP3 ON and JP4 OFF

This mode gives a continuous alarm sound when the door has been left open beyond a preset time. Timing options are set using the Rotary Switch inside the alarm. (See "Door Held Open Delay Before Alarm Activation" chart below for timing options).

- Set the LED status indication for Door Propped Open Mode, set JP3 to ON and JP4 to OFF.
- Set the desired time prior to installing the battery.

Changing the time can be done in two ways:

 - Clear the door magnet paired locations from memory, set the new time using switch S6 and pair the door magnet again.
 - Disconnect the battery, set the time using the Rotary Switch S6, turn the key to the "ON" position and reconnect the battery. The LEDs will flash to indicate the time setting as per the chart below.
- Turn the key to the "OFF" (2 o'clock) position. The GREEN LED flashes twice every 6 seconds.
- Close the door so the door magnet is in the paired position.
- Turn the key to the "ON" (12 o'clock) position. The RED LED flashes twice every 6 seconds.
- Open the door. The RED LED will continually flash and the alarm sounder will activate when the Door Propped Open time expires as set by rotary switch. The alarm sounds until the door is closed or the key is turned to the "OFF" position.

Door Propped Open Delay Before Alarm Activation

Rotary Switch (S6 PCB Position)	Door Propped Open Timer	LED Indication (after the initial pairing sequence indication)
0	1 second	1 GREEN blink
1	15 seconds (Default)	1 RED blink - 5 GREEN blinks
2	30 seconds	3 RED blinks
3	45 seconds	4 RED blinks - 5 GREEN blinks
4	1 minute	1 RED & GREEN simultaneous blinks
5	2 minutes	2 RED & GREEN simultaneous blinks
6	4 minutes	4 RED & GREEN simultaneous blinks
7	Future Use	Will set to factory default of 15 seconds
8	Future Use	Will set to factory default of 15 seconds
9	Future Use	Will set to factory default of 15 seconds

Pairing or Changing the Door Magnet Location

- Place the magnet over the desired contact side or connect the external door position sensor to the 2-pin connector. External door position sensor must provide closed contact when the door is closed. Only one paired location can be used.
- Turn the key to the "OFF" position and short the JP2 pins briefly to clear memory. Both LEDs flash five times and device beeps five times.
- Turn the key to the "ON" position. RED LED flashes twice, then the GREEN LED flashes once with a simultaneous single beep. If set for Door Propped Open Mode, the LEDs will then flash to indicate the timing setting as per the Door Propped Open Delay Before Alarm Activation table.

Low Battery Alert

The CX-DA810/DA810W is equipped with a low battery monitoring feature:

When the battery voltage falls below 7V DC, the system emits a short beep every 45 seconds, indicating the need for battery replacement.

8. POWER

Install the Battery:

Connect a 9V battery to the battery buckle and insert it into the top slot, ensuring the correct orientation as illustrated in Figure 8 Battery Operation.

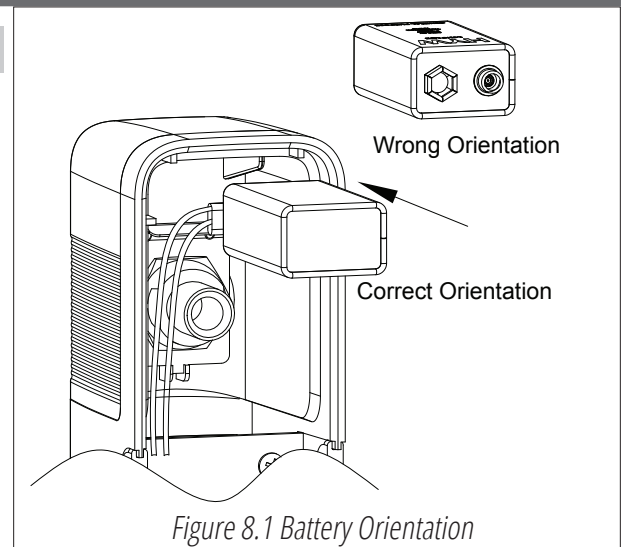


Figure 8.1 Battery Orientation

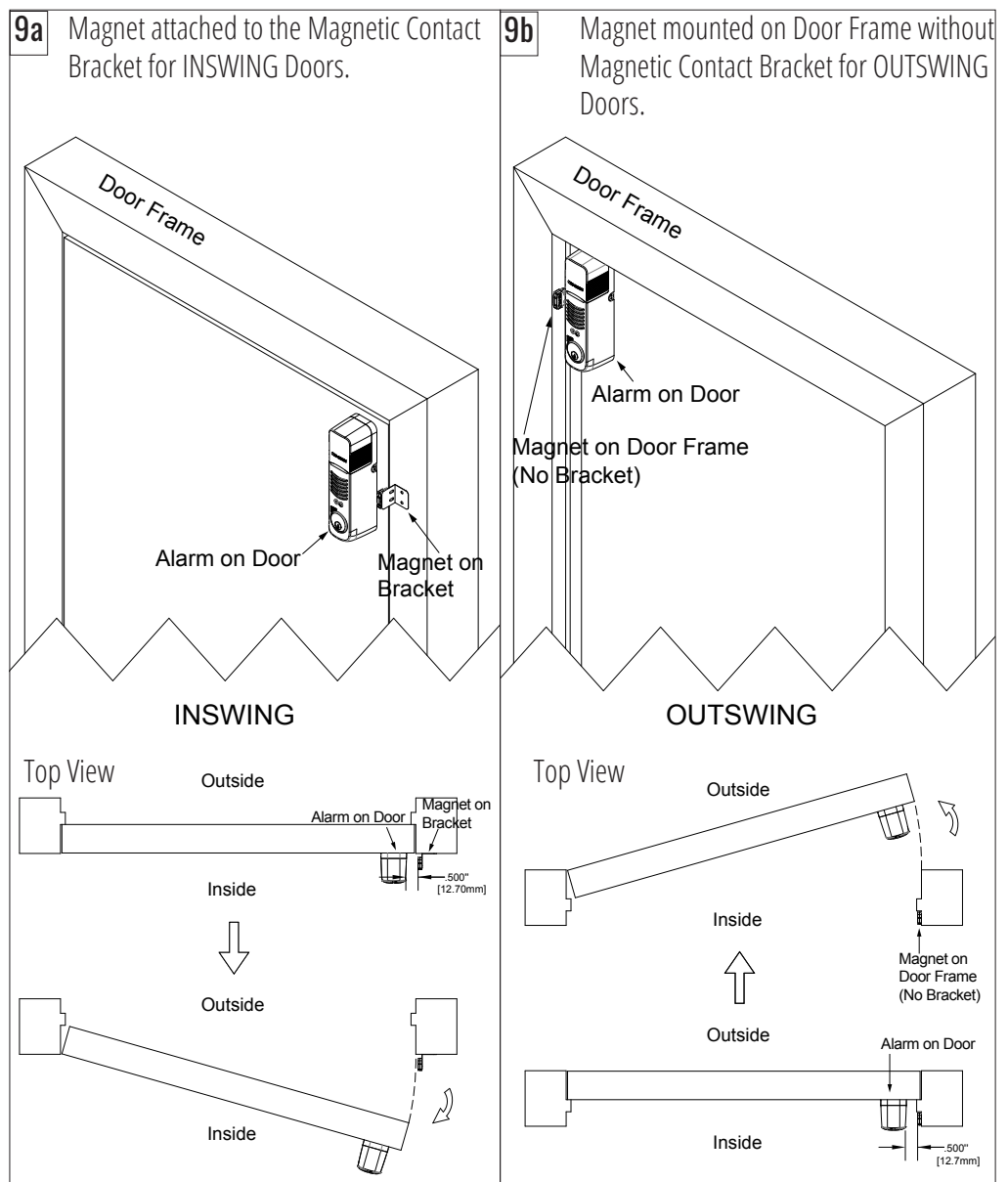
9. MOUNTING INSTALLATION

Magnetic Door Contact

Location Guide: For optimum contact, the Magnet must align with the Door Alarm correctly, and the maximum space between the Magnet and the side of the Door Alarm is 1/2" (12.7mm). See Figure 9a - 9d) for location and centering guide.

Note: INSWING/OUTSWING Doors

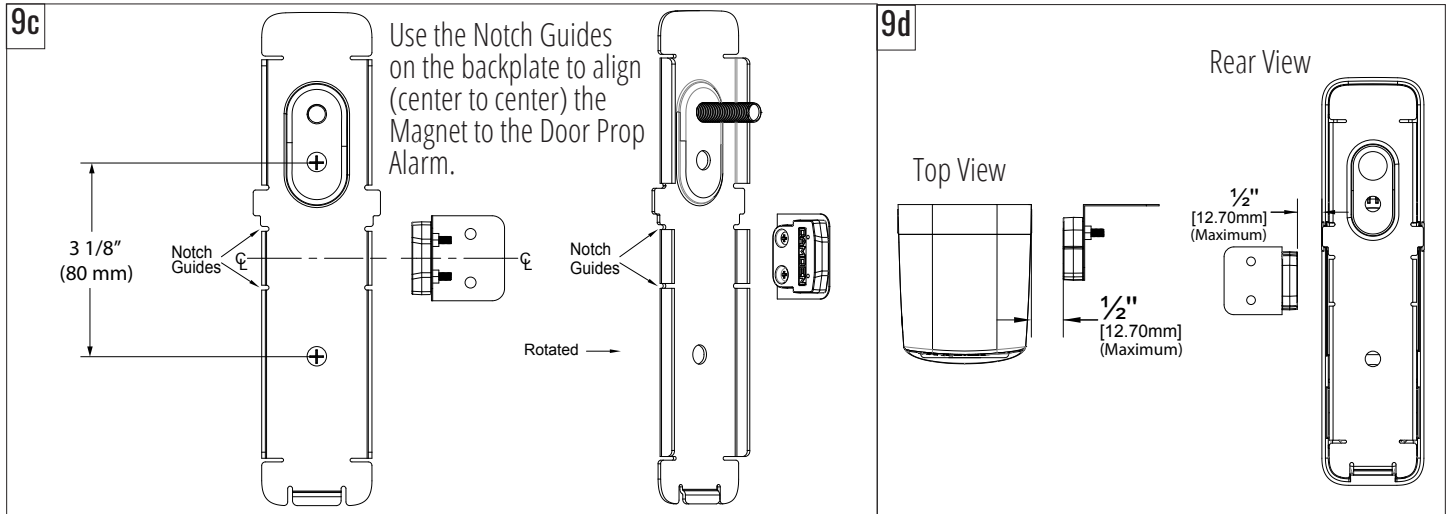
- On INSWING Doors, the Magnetic Door Contact mounts to the Frame with the Magnetic Contact Bracket. (See Figure 9a).
- On OUTSWING Doors, the Magnetic Door Contact mounts directly on the Frame without the Magnetic Contact Bracket. (See Figure 9b)



9.1. Mounting the Alarm and Magnetic Door Contact: Place the backplate near the door edge and magnet on the frame, and mark the locations for the magnet and backplate. (See Figure 9c - 9d)

9.2. Drilling for Backplate Mounting: Drill holes using a #7 (0.201" or 13/64") drill bit for 1/4-20 x 1" machine screws, or a 0.218" (7/32") bit for #14 sheet metal screws, following the positions indicated in the figures.

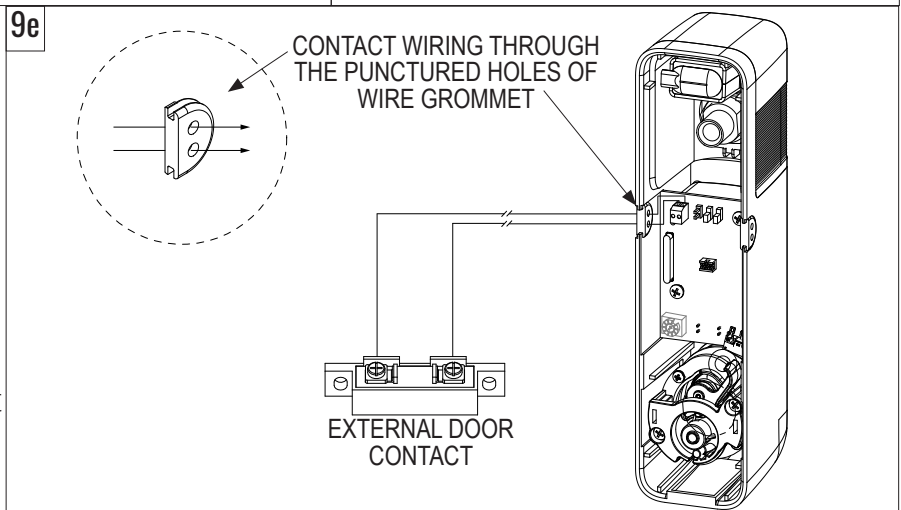
9.3. Drilling for Magnet Mounting: Use a #32 (0.116" or 7/64") drill bit.



External Door Contact Connection:

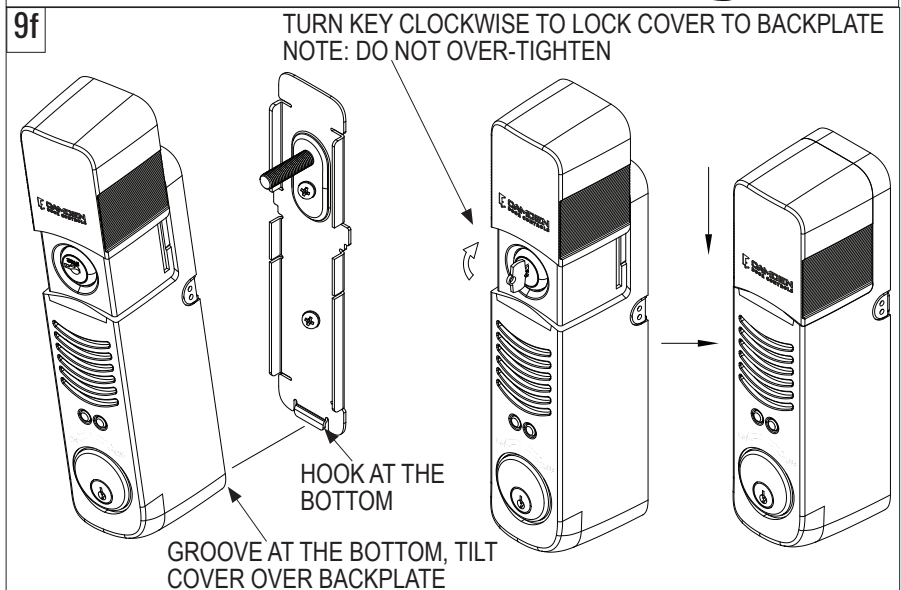
You can connect the wiring from an external door contact to the JP5 Terminal Block on the PCB. (See Figure 9e)

- Remove the Wire Grommet on the side where you will insert the external door contact wiring.
- Use a scribe or punch to puncture the two recessed holes on the Wire Grommet to create the wiring through holes.
- Place the Wire Grommet back on the Alarm.
- Insert the two wires through the Wire Grommet and connect them into the JP5 Terminal Block on the PCBA.



9.4. Final Assembly

- Attach the alarm cover to the mounted backplate latching the bottom hook on the backplate into bottom groove of the cover.
- Insert and turn the key clockwise to secure the door alarm to the mounted backplate. (See Figure 9f)



FAQ

Q 1. How can I switch between alarm and chime?

A 1. Use JP4 settings to configure for chime mode or door propped open mode.

Q 2. Can the alarm be used outdoors?

A 2. The DA810W alarm has an IP Rating of IP-44, making it suitable for outdoor use. It can handle water splashes and dust but is not waterproof. Its operating temperature range is 32° F to 113° F (0° C to 45° C).

Q 3. How do I ensure the alarm is armed correctly?

A 3. When armed, the RED LED will blink twice every 6 seconds. Make sure the door contact is properly closed.

Q 4. What to do if the alarm does not arm or disarm using the key?

A 4. Check if the cylinder and cam holder are properly installed and that the key is turning completely. Also, ensure that the alarm is correctly mounted and that no parts are obstructing the key mechanism.

TROUBLESHOOTING

Problem	Possible Cause	Solution
Alarm does not activate upon door opening.	Battery not installed or low power.	Ensure a fresh 9V battery is properly installed. Check battery voltage if necessary.
	Door contact not properly aligned.	Adjust to align the placement of the door magnet and contact.
Alarm sounds continuously.	Misalignment of door contact.	Realign and secure the door contact and magnet placement.
LED indicators not functioning.	Circuit issue or LED malfunction.	Check connections on the PCBA for damage or loose connections. Replace if necessary.
Key turns but alarm status does not change.	Cylinder or cam holder not correctly installed.	Revisit installation steps for the lock cylinder and cam holder. Ensure all components are secured.
Alarm chirps unexpectedly.	Low battery alert.	Replace the battery if voltage is below 7V DC as indicated by the periodic chirping.
Alarm does not occur when door is propped open beyond expected time.	Incorrect procedure followed.	Follow the specific steps for door propped open timer.
Alarm sound volume is too low or inaudible.	Speaker malfunction or misconnection.	Check the speaker connections and ensure the speaker is not damaged. Replace if necessary.
External door contact does not trigger the alarm.	<ul style="list-style-type: none"> Incorrect installation or faulty external contact. Was paired to left or right side. 	<ul style="list-style-type: none"> Ensure external contact is correctly connected to the JP5 connector and functioning properly. Clear memory and pair for new location.