



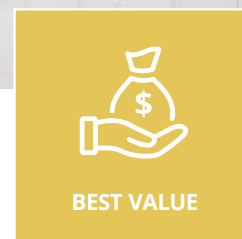
CX-ED1079 Series 'Universal' Low & Standard Profile Electric Strikes



CX-ED1079 (low profile, for 1/2" - 5/8" latch projection) and CX-ED1079D (standard depth, for 5/8" - 3/4" latch projection) 'Universal' grade 1 ANSI strikes offer 'universal' performance with selectable 12/24V AC/DC and fail safe/fail secure operation, and have horizontal body adjustment. Both models have optional latch monitoring.



MORE FLEXIBILITY



BEST VALUE

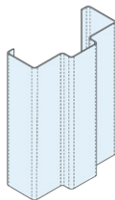
Features

- Centerline latch entry for cylindrical locksets
- Adjustable strike body
- Selectable 12/24V AC/DC
- Selectable fail safe / fail secure operation
- (3) Stainless steel faceplates included
- Faceplates also available in black architectural finish (BHMA 622, US19)
- Horizontal adjustability of strike body
- Non-handed
- Easy fit connectors for power & monitoring wires
- Trim plate included
- Continuous duty operation
- BHMA certified A156.31
- 5 year warranty

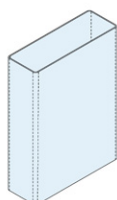


DOOR FRAME TYPES

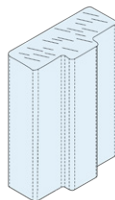
Hollow Metal Frame



Aluminum Frame

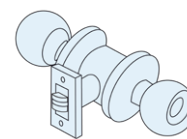


Wood Frame



COMPATIBLE LOCKSETS

Cylindrical Lockset



SPECIFICATIONS

| | | | |
|------------------------|---|--------------------|--|
| VOLTAGE: | 12/24V AC/DC | LATCH MONITOR: | SPDT, 100mA @ 24V DC |
| CURRENT DRAW: | 260mA @ 12V AC/DC 150mA @ 24V AC/DC | MODE: | Field selectable fail safe/fail secure operation |
| STATIC HOLD FORCE: | 1,500 lbs | OPERATION: | AC - Buzz, DC - Silent |
| DYNAMIC STRENGTH: | 70 Ft-lbs | DUTY: | Continuous |
| ENDURANCE: | 1,000,000 Cycles (Factory Tested) 500,000 Cycles (UL Verified) | DIMENSIONS (BODY): | CX-ED1079: 3-3/8" L x 1-3/4" W x 1-7/32" D (86mm x 44mm x 31mm) CX-ED1079D: 3-3/8" L x 1-3/4" W x 1-3/8" D (86mm x 44mm x 35mm) |
| MECHANICAL ADJUSTMENT: | Strike body | | |

ORDERING INFORMATION

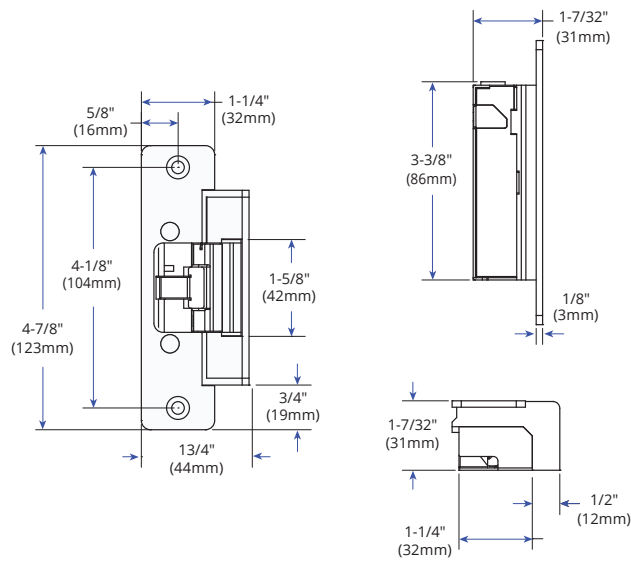
MODEL

| | |
|-----------------------|---|
| CX-ED1079 | Low Profile Grade 1 'Universal' electric strike, 12/24V AC/DC, fail safe / fail secure operation, horizontal adjustment, and (3) stainless steel faceplates (CX-ESP1B, CX-ESP3B & CX-ESP4B) |
| CX-ED1079L | As above, with latch monitoring |
| CX-ED1079-BK | Low Profile Grade 1 'Universal' electric strike, 12/24V AC/DC, fail safe / fail secure operation, horizontal adjustment, and (3) Black faceplates (CX-ESP1B-BK, CX-ESP3B-BK & CX-ESP4B-BK) |
| CX-ED1079L-BK | As above, with latch monitoring |
| CX-ED1079D | Standard Depth Grade 1 'Universal' electric strike, 12/24V AC/DC, fail safe / fail secure operation, horizontal adjustment, and (3) stainless steel faceplates (CX-ESP1B, CX-ESP3B & CX-ESP4B) |
| CX-ED1079DL | As above, with latch monitoring |
| CX-ED1079D-BK | Standard Depth Grade 1 'Universal' electric strike, 12/24V AC/DC, fail safe / fail secure operation, horizontal adjustment, and (3) Black faceplates (CX-ESP1B-BK, CX-ESP3B-BK & CX-ESP4B-BK) |
| CX-ED1079DL-BK | As above, with latch monitoring |

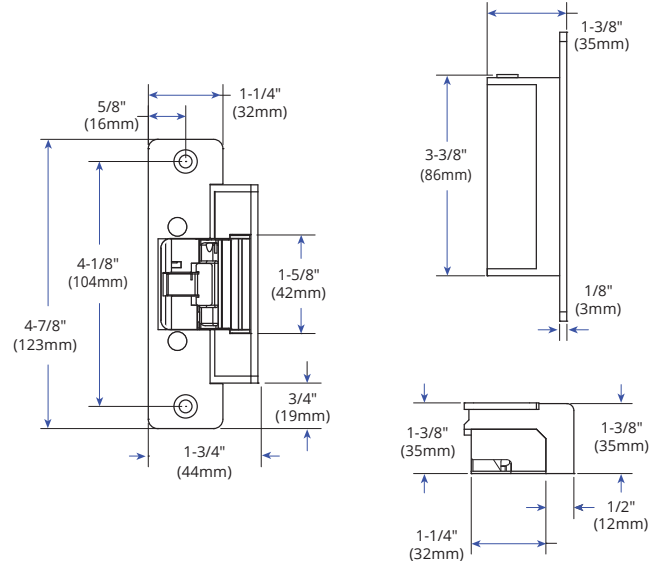


DIMENSIONS

CX-ED1079



CX-ED1079D



ORDERING INFORMATION

INCLUDED IN PACKAGE

| | |
|-----------------|---|
| CX-ESP1B | 'ANSI' Square, 4-7/8" x 1-1/4", stainless steel |
| CX-ESP3B | Hollow Metal Door, 6-7/8" x 1-1/4", stainless steel |
| CX-ESP4B | Wood Door, 7-15/16" x 1-7/16", stainless steel |

OPTIONAL FACEPLATES

| | |
|--------------------|---|
| CX-ESP2B | 'ANSI' Round, 4-7/8" x 1-1/4", stainless steel |
| CX-ESP1B-BK | 'ANSI' Square, 4-7/8" x 1-1/4", black finish (BHMA 622, US19) |
| CX-ESP2B-BK | 'ANSI' Round, 4-7/8" x 1-1/4", black finish (BHMA 622, US19) |
| CX-ESP3B-BK | Hollow Metal Door, 6-7/8" x 1-1/4", black finish (BHMA 622, US19) |
| CX-ESP4B-BK | Wood Door, 7-15/16" x 1-7/16", black finish (BHMA 622, US19) |



| FACEPLATE DIMENSIONS | | | |
|--|--|--|---|
| INCLUDED IN PACKAGE | | | OPTIONAL FACEPLATE |
| <p>'ANSI' Square</p> <p>CX-ESP1B</p> | <p>Hollow Metal Door</p> <p>CX-ESP3B</p> | <p>Wood Door</p> <p>CX-ESP4B</p> | <p>'ANSI' Round</p> <p>CX-ESP2B</p> |

| LIP EXTENSION BRACKETS | |
|------------------------|---|
| CX-ED-LIP1 | 1" Lip extension for 'ANSI' strikes (stackable) |
| CX-ED-LIP2 | 2" Lip extension for 'ANSI' strikes |