



CX-ED1079 Series 'Universal' Low & Standard Profile Electric Strikes



CX-ED1079 (low profile, for 1/2" - 5/8" latch projection) and CX-ED1079D (standard depth, for 5/8" - 3/4" latch projection) 'Universal' grade 1 ANSI strikes offer 'universal' performance with selectable 12/24V AC/DC and fail safe/fail secure operation, and have horizontal body adjustment. Both models have optional latch monitoring.



MORE FLEXIBILITY



BEST VALUE

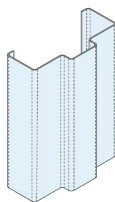
Features

- Centerline latch entry for cylindrical locksets
- Adjustable strike body
- Selectable 12/24V AC/DC
- Selectable fail safe / fail secure operation
- (3) Stainless steel faceplates included
- Faceplates also available in black architectural finish (BHMA 622, US19)
- Horizontal adjustability of strike body
- Non-handed
- Easy fit connectors for power & monitoring wires
- Trim plate included
- Continuous duty operation
- BHMA/ANSI A156.31, Grade 1 certified
- 5 year warranty

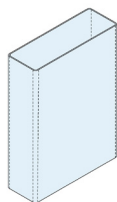


DOOR FRAME TYPES

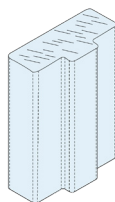
Hollow Metal Frame



Aluminum Frame

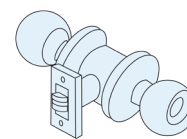


Wood Frame



COMPATIBLE LOCKSETS

Cylindrical Lockset



SPECIFICATIONS

VOLTAGE:	12/24V AC/DC	LATCH MONITOR:	SPDT, 100mA @ 24V DC
CURRENT DRAW:	260mA @ 12V AC/DC 150mA @ 24V AC/DC	MODE:	Field selectable fail safe/fail secure operation
STATIC HOLD FORCE:	1,500 lbs	OPERATION:	AC - Buzz, DC - Silent
DYNAMIC STRENGTH:	70 Ft-lbs	DUTY:	Continuous
ENDURANCE:	1,000,000 Cycles (Factory Tested) 500,000 Cycles (UL Verified)	DIMENSIONS (BODY):	CX-ED1079: 4-7/8" L x 1-7/8" W x 1-7/32" D (124mm x 47mm x 31mm) CX-ED1079D: 4-7/8" L x 1-7/8" W x 1-3/8" D (124mm x 47mm x 35mm)
MECHANICAL ADJUSTMENT:	Strike body		

ORDERING INFORMATION

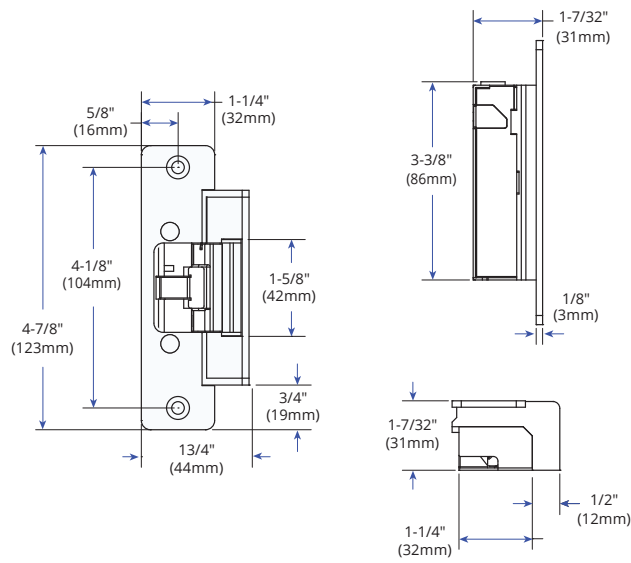
MODEL

CX-ED1079	Low Profile Grade 1 'Universal' electric strike, 12/24V AC/DC, fail safe / fail secure operation, horizontal adjustment, and (3) stainless steel faceplates (CX-ESP1B, CX-ESP3B & CX-ESP4B)
CX-ED1079L	As above, with latch monitoring
CX-ED1079-BK	Low Profile Grade 1 'Universal' electric strike, 12/24V AC/DC, fail safe / fail secure operation, horizontal adjustment, and (3) Black faceplates (CX-ESP1B-BK, CX-ESP3B-BK & CX-ESP4B-BK)
CX-ED1079L-BK	As above, with latch monitoring
CX-ED1079D	Standard Depth Grade 1 'Universal' electric strike, 12/24V AC/DC, fail safe / fail secure operation, horizontal adjustment, and (3) stainless steel faceplates (CX-ESP1B, CX-ESP3B & CX-ESP4B)
CX-ED1079DL	As above, with latch monitoring
CX-ED1079D-BK	Standard Depth Grade 1 'Universal' electric strike, 12/24V AC/DC, fail safe / fail secure operation, horizontal adjustment, and (3) Black faceplates (CX-ESP1B-BK, CX-ESP3B-BK & CX-ESP4B-BK)
CX-ED1079DL-BK	As above, with latch monitoring

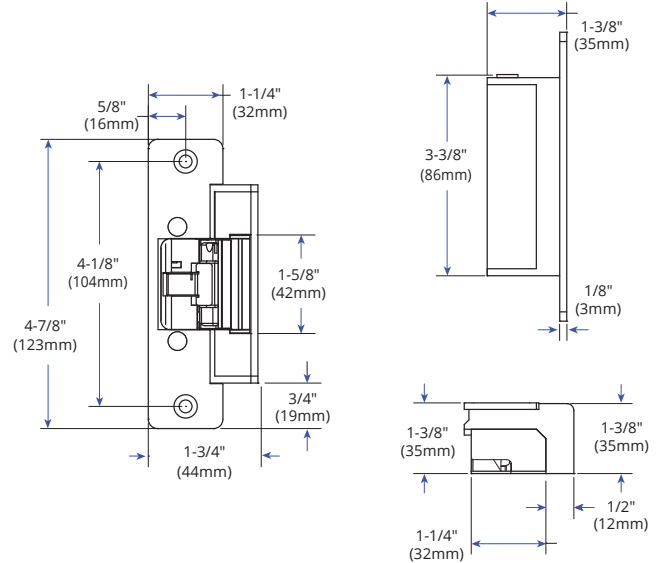


DIMENSIONS

CX-ED1079



CX-ED1079D



ORDERING INFORMATION

INCLUDED IN PACKAGE

CX-ESP1B	'ANSI' Square, 4-7/8" x 1-1/4", stainless steel
CX-ESP3B	Hollow Metal Door, 6-7/8" x 1-1/4", stainless steel
CX-ESP4B	Wood Door, 7-15/16" x 1-7/16", stainless steel

OPTIONAL FACEPLATES

CX-ESP2B	'ANSI' Round, 4-7/8" x 1-1/4", stainless steel
CX-ESP1B-BK	'ANSI' Square, 4-7/8" x 1-1/4", black finish (BHMA 622, US19)
CX-ESP2B-BK	'ANSI' Round, 4-7/8" x 1-1/4", black finish (BHMA 622, US19)
CX-ESP3B-BK	Hollow Metal Door, 6-7/8" x 1-1/4", black finish (BHMA 622, US19)
CX-ESP4B-BK	Wood Door, 7-15/16" x 1-7/16", black finish (BHMA 622, US19)



FACEPLATE DIMENSIONS			
INCLUDED IN PACKAGE			OPTIONAL FACEPLATE
<p>'ANSI' Square</p> <p>CX-ESP1B</p>	<p>Hollow Metal Door</p> <p>CX-ESP3B</p>	<p>Wood Door</p> <p>CX-ESP4B</p>	<p>'ANSI' Round</p> <p>CX-ESP2B</p>

LIP EXTENSION BRACKETS	
CX-ED-LIP1	1" Lip extension for 'ANSI' strikes (stackable)
CX-ED-LIP2	2" Lip extension for 'ANSI' strikes